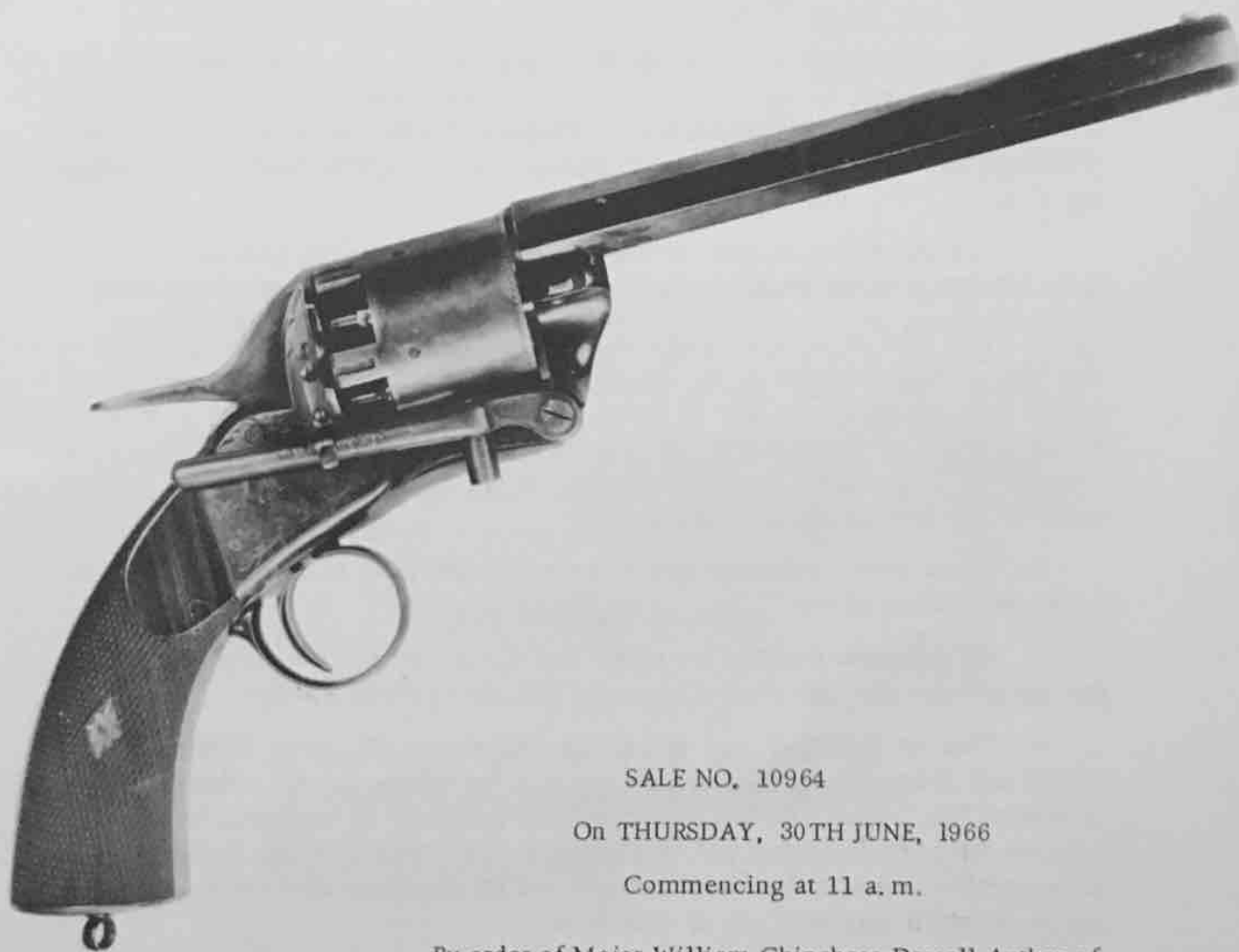


Weller & Dufty Ltd

Auctioneers of Antique Arms and Armour

FINE ART SALE ROOMS

141 BROMSGROVE STREET, BIRMINGHAM 5



SALE NO. 10964

On THURSDAY, 30TH JUNE, 1966

Commencing at 11 a. m.

By order of Major William Chipchase Dowell Author of
"The Webley Story" - His entire Collection of Pistols,
Revolvers, Automatics, Tools, Gauges, Moulds and other
Webley Items, together with his Library of Arms Books
and Magazines.



CONDITIONS OF SALE

1. The highest bidder to be the Purchaser, and if any dispute arise, the Lot in dispute to be put up again and re-sold, or the Purchaser may be decided by the Auctioneer, who also reserves to himself the right of bidding on behalf of the Vendor or refusing any bidding, or withdrawing any Lot, also the right to divide or amalgamate any Lots.

2. The Purchasers to give in their Names and Residences, and pay a deposit of Five Shillings in the Pound immediately on the fall of the hammer (if required).

3. The Lots to be taken away and paid for (whether genuine or authentic or not) with all fault or errors in the description at the Purchaser's own risk, within one day of Sale, except in the case of Postal Buyers. Although every effort is made to ensure accuracy of descriptions, No Warranty is given with any Lot, WELLER & DUFTY LTD. not being responsible for the correct description, genuineness, authenticity, or any fault or defect in any Lot.

4. If one person purchases two or more Lots the price of all must be paid for before the delivery of any.

5. *All purchases not paid for within one day of Sale will be charged interest at the rate of 5 per cent. per annum (except in the case of Postal Bidders).*

6. That on failure of any person complying with the above Conditions, the deposit will become forfeited, and Lots not paid for will be re-sold, either by Public or Private Sale, without further notice, and the deficiency (if any) together with all expenses attending the same, will be charged to the defaulter at this Sale, and shall be recoverable as and for liquidated damages, but the Purchaser shall not be entitled to any profit which may arise out of such re-sale.

7. WELLER & DUFTY LTD. do not accept responsibility for shooting safety of any weapon sold. The description of muzzle-loading weapons is for guidance as collectors' pieces only. The Auctioneers can accept no responsibility for weapons fired.

WELLER & DUFTY LTD.,
Auctioneers

ON THURSDAY, 30TH JUNE, 1966

Commencing promptly at

11.0 a.m.

BY ORDER OF MAJOR WILLIAM CHIPCHASE DOWELL

AUTHOR OF "THE WEBLEY STORY"

HIS ENTIRE COLLECTION OF PISTOLS, REVOLVERS, AUTOMATICS, TOOLS,
GAUGES, MOULDS AND OTHER WEBLEY ITEMS, TOGETHER WITH HIS LIBRARY
OF ARMS BOOKS AND MAGAZINES.

Including: A magnificent cased set of four Webley percussion pistols, several cased "Longspur" percussion revolvers, 1st, 2nd and 3rd models, Bentley percussion revolvers, wedge and solid frame percussion revolvers, a superb presentation gunmetal pin fire revolver, a rare .577 C.F. revolver, a shoulder stocked "Army Express" model in .44 Russian calibre, and many variations of R.L.C. models, Army Expresses, W. G. and Wilkinson models, a rare Webley/Greener revolver bayonet, experimental revolvers including an "in the white" swing out cylinder R.L.C. revolver, a rare single action "Army Express" revolver and many other items.

SALE BY AUCTION AS ABOVE

On view Tuesday 28th June, 9 a.m. to 6 p.m. and
on Mornings of 29th and 30th June 9 a.m. to 11 a.m.

LIGHT REFRESHMENTS OBTAINABLE

Catalogues 2/6d. each.

Tel. MIDland 5525/5360 (5lines)

Cables: Fineart, Birmingham.

INDEX

	Commencing Lot
AUTOMATIC PISTOLS	346
BOOKS AND MAGAZINES	182
CENTRE & RIM FIRE PISTOLS & REVOLVERS ...	18, 121, 235, 361
PERCUSSION PISTOLS & REVOLVERS	1, 384
PIN FIRE WEAPONS	112
TOOLS, CASES, ACCESSORIES ETC	65, 294

ON THURSDAY, 30TH JUNE, 1966

Commencing at 11 a. m.

C A T A L O G U E

by D. A. NIE

NOTE: For the convenience of purchasers the average rate of selling is approximately 100 lots per hour.

Purchasers of items marked *** must hold a Firearm Certificate or a Firearm Dealer's Registration.

NOTE All reference in this Catalogue to Plate Numbers refers to the Vendors Book "THE WEBLEY STORY" Copies of which are obtainable from The Auctioneers - Price £6. 6. 0d.

PERCUSSION PISTOLS AND REVOLVERS.

Lot

- 1 A 100 bore, 5 shot Webley closed wedge frame double action percussion revolver retailed by Dooley, Liverpool, Colt type rammer, two piece chequered grips, marked on left frame Patent No. 2042, trigger spring A. F. and one nipple missing, otherwise excellent condition and working order with much original finish, similar to Plate 19a, in a mahogany case with a tin of caps, the interior of the case is missing and the case requires re-gluing. Overall 9½in. Brl. 4¾in.
- 2 A rare 48 bore open frame 5 shot single action percussion revolver by P. Webley, octagonal barrel wedged to cylinder pin, long hammer spur, small guard with spur extension. Tranter style loading lever on left, finely chequered one piece grip with silver escutcheon and lanyard ring, lightly scroll engraved, marked on right side of frame "P. Webley Patentee No. 134" and on loading lever, "Improved Loading Rod", excellent condition and working order with much original finish, see Plate 11e, in its mahogany case with fine common top bag flask, cleaning rod, nipple key, 60 bore iron pincer mould (associated), oil bottle, cap tins, bullet bag and reproduction label; the lining of the case has been carefully removed and all partitions are intact, the whole in very good order. Overall 12in. Brl. 6in.
- 3 An interesting and rare brass percussion Fuse pistol MK1, 1877, ordnance marked, used by Royal Engineers for blasting etc. box lock construction, the screw off barrel, frame and guard all of brass, belt hook on right, lanyard ring in butt, excellent condition and working order and an unusual military item, see Plate 59c. Overall 7in. Brl. 2½in.
- 4 A 16 bore Webley fullstocked percussion ships pistol, the barrel marked J. W. (James Webley) military type lock marked with crown and Tower, iron ramrod, brass furniture of French style, very good condition and working order and identical to pistols pictured in a P. Webley & Sons catalogue circa 1870, see Plates 2 and 106, a most unusual Webley item. Overall 15in. Brl. 8in.

Lot

- 5 A 75 bore 5 shot open frame Bentley double action percussion revolver, octagonal barrel wedged to cylinder pin, Colt type rammer, engraved on barrel "Robt. Jones 3Gt. Howard St., Liverpool", and on left side of frame Patent No. 41, safety catch on right side, lightly scroll engraved, chequered one piece walnut grip, very good condition and working order with much original finish, see Plate 17c. Overall 10½in. Brl. 5¾in.
- 6 A 54 bore 5 shot closed wedge frame Webley/Bentley percussion self cocking revolver with Bentleys patent catch on hammer, Kerr rammer on left, converted with a split cylinder for .442 C. F. cartridges, this type of cylinder was made by cutting off the back of the percussion cylinder and fitting a special detachable plate containing the strikers, excellent condition and working order, see Plate 18d *** Overall 12in. Brl. 6¾in.
- 7 A .38 5 shot self cocking nickle plated open frame Webley/Bentley style percussion revolver converted to centre fire, spring half cock safety on left, pronounced "prawl" on butt, two piece chequered walnut grips, loading gate and rod ejector on right, the nickle plating carried out at the time of conversion excellent condition and working order, see Plate 27b *** Overall 8¾in. Brl. 4in.
- 8 A 52 bore screw barrelled, boxlock percussion pocket pistol, scroll engraved frame, bright finish, good condition and working order, see Plate 10a for illustrations of similar pistols in old Webley catalogues. Overall 7in. Brl. 3¼in.
- 9 A most unusual 90 bore 6 shot self cocking percussion pepperbox built on a Webley/Bentley percussion revolver frame, with spring half cock safety on left, the barrel group is virtually an elongated percussion revolver cylinder without fluting, two piece chequered walnut grips, very good condition and working order, with light scroll engraving, see Plate 11a. Overall 6½in. Brl. 2in.
- 10 A 120 bore closed wedge frame 6 shot self cocking percussion revolver, the hammer fitted with Bentleys patent half cock safety catch, octagonal barrel, engraved Patent No. 38195 on right side of frame, Kerr type rammer fitted to left side of barrel, two piece chequered walnut grips, excellent condition and working order with much original blue, see Plate 18b. Overall 7½in. Brl. 2 7/8 in.
- 11 A fine 54 bore five shot open frame self cocking Bentley percussion revolver ser. no. A, 561, the hammer fitted with Bentleys patent safety catch, octagonal barrel wedged to cylinder pin and fitted with Bentleys patent quick thread rammer, a spring bayonet is attached to the right side of the barrel with a simple slide release just in front of cylinder, two piece chequered walnut grips, trap in butt for caps or spare nipples, the frame, hammer, guard and butt trap covered overall with high quality scroll engraving, excellent condition and working order with much original finish, in its brass bound mahogany case containing copper three way flask, double cavity brass mould, nipple key, oil bottle, cleaning rod, cap tin, 5 skin cartridges and wad punch for pierced wads, the whole in excellent condition, see Plate 17a. Overall 12in. Brl. 7in.
- 12 A 52 bore 5 shot open frame self cocking Webley/Bentley percussion revolver, octagonal barrel screwed onto cylinder pin and retained by thumbscrew to bottom strap, hammer fitted with Bentleys patent catch, lightly scroll engraved frame, chequered walnut two piece grips, excellent condition and working order with much original finish, see Plate 16c. Overall 10½in. Brl. 5in.

Lot

- 13 A 100 bore 6 shot bar hammer self cocking transition percussion revolver by Hollis & Sheath, retailed by Cogswell, octagonal barrel screwed on to cylinder pin and retained to bottom strap with a thumbscrew, sighting slot cut through hammer, butt trap for caps or nipples, nicely scroll engraved, two piece chequered walnut grips, very good condition and working order with much original finish, see Plate 11c. Overall 11½in. Brl. 5in.
- 14 A 48 bore 5 shot Webley Longspur 1st Model single action percussion revolver ser. no. 294, octagonal barrel with peg on right for detachable rammer, engraved James Webley address, scroll engraved frame with James Webley Patentee on left side and "By Her Majesty's Royal Letters Patent" on backstrap, lanyard ring in butt, hinged barrel, wedged to cylinder pin, two piece chequered walnut grips, wedge retaining screw, mainspring retaining screw and detachable rammer missing, action weak, otherwise very good condition and working order with some original finish, in its mahogany case with fluted patent top Hawksley flask, cap tins, oil bottle, cleaning rod, nipple key, single cavity brass mould and case key, formerly in the Greener collection, case and contents in excellent condition. Overall 12½in. Brl. 7in.
- 15 A most interesting 54 bore/.442 C. F. dual system Webley solid frame double action revolver, fitted with both percussion and cartridge cylinders having locking slots near the front, ser. no. 1220, screwed in octagonal barrel with Kerr type rammer on left, and sliding rod ejector on right, loading gate on right, spring loaded lever cylinder pin release, one piece chequered walnut grip with lanyard ring, London proved, retailed by Alex Henry, Edinburgh, marked on left side of barrel breech Webley's Patent, and on right side with winged bullet and W & S, excellent condition and working order with most original finish, in its original fitted oak case containing tin of Patent Lubricating bullets for Webley revolvers, lubricating paste, cap tin, oil bottle, cleaning rod, single cavity 54 bore brass mould with steel sprue cutter, lozenge shaped copper flask, nipple key, chamber scraper and ivory nipple box with some .442 blanks, the whole in excellent order, see Plate 27d *** Overall 11in. Brl. 5½in.
- 16 A 54 bore 5 shot Webley closed wedge frame double action percussion revolver, octagonal barrel with Kerr type rammer on left, scroll engraved frame, two piece chequered walnut grip, some light pitting, very good condition and working order with some original finish see Plate 19d. Overall 11½in. Brl. 6in.
- 17 A 120 bore 5 shot Webley closed wedge frame double action percussion revolver, octagonal barrel with Kerr type rammer on left, scroll engraved frame, two piece chequered walnut grip, trigger spring A. F. and foresight missing otherwise very good condition and working order with some original finish, see Plate 19b. Overall 8½in. Brl. 4in.

CENTRE & RIM FIRE PISTOLS AND REVOLVERS.

- 18 A fine .455/.476 Webley 189£ W. G. Army model revolver with square butt, ser. no. 12214, chequered walnut grips, excellent condition and working order, in its original oak case with retailer's label, cleaning rod and cartridge block with 30 rounds of .450 blank ammunition the whole in excellent order, see Plate no. 45a *** Brl. 6in.
- 19 A rare .45 Webley New Model Army Express double action revolver ser. no. 4842 engraved on barrel Silver & Fletcher's Patent "The Expert", the hammer fitted with Silver & Fletcher's patent extractor and safety, solid frame with screwed in octagonal ribbed barrel, sliding rod ejector on right hand side, two piece chequered birds head grip with lanyard ring, excellent condition and working order with most original finish, in its original oak case with cleaning rod and oil bottle, see Plate no. 35d; the Army Express models were designed as an answer to the Colt Double Action Army weapon. *** Brl. 5½in.

Lot

- 20 A scarce .476 MK1, 1880 model Enfield self extracting British Service revolver, Owen Jones's Patent, ser. no. 10646, one piece chequered walnut grip, ordnance marked including grip, lanyard ring, excellent condition and working order with most original finish, see Plate no. 56f. This is a top break weapon and when broken the cylinder is drawn forward leaving the empty cartridge cases in the fixed star extractor. *** Brl. 5½in.
- 21 A similar weapon, ser. no. 6175, excellent condition and working order, similar Plate no. 56f. ***
- 22 A .476 MK II, 1882, model Enfield self extracting British Service revolver, ser. no. 4898, plain one piece walnut grip, ordnance marked, excellent condition and working order, see Plate no. 56c. This is essentially the same as the Mk I weapon with minor improvements. ***
- 23 A .476 Webley MK I, 1887 double action British Service revolver, ser. no. 3434, two piece chequered hard rubber birds head grip with lanyard ring, excellent condition and working order, similar to Plate 48e; this was the first model Webley revolver to be adopted by the British Army. *** Brl. 4in.
- 24 An early .44 R. F. six shot double action solid frame revolver retailed by A. Henry, Edinburgh ser. no. 265, compound lever ejector on right side with rearward opening loading gate, lever release for cylinder pin, one piece chequered grip, streamlined frame, excellent condition and working order with most original finish, in its mahogany case with cleaning rod, oil bottle and cartridge block, see Plate no. 24e. *** Brl. 6in.
- 25 A nice .450/.455 Webley Pryse double action revolver ser. no. 2415, the barrel marked "Pryses British Army Revolver (Patentee) frame marked Pryses Patent, also Junior Army & Navy, London, diamond shaped mark and Patent 1764 on right, plain cylinder without flutes and with locking slots near front, chequered one piece walnut grip with lanyard ring, excellent condition and working order with nearly all original blue, in its oak case with cleaning rod and clearing rod, see Plate 40b. *** Brl. 5½in.
- 26 A .476 Webley No. 1 R. I. C. New Model 1882 solid frame double action revolver, fluted cylinder, chequered one piece grip with lanyard ring, ser. no. 85423, very good condition and working order with much original finish, similar to Plate no. 34e. *** Brl. 4½in.
- 27 A rare .450/.455 Webley "Army Express" solid frame, double action revolver ser. no. 77220, ovate shaped barrel, sliding rod Colt type ejector and loading gate on right, marked on top strap P. Webley & Son, London and Birmingham, one piece chequered walnut grip with lanyard ring, excellent condition and working order with much original commercial blue finish, see Plate 22a. *** Brl. 6in.
- 28 A scarce .455/.476 Webley Kaufmann top break, self extracting revolver, patent cross bolt latch, ser. no. 983, retailed by Army & Navy Co. S. L. chequered walnut birds head grips marked "M. Portal" excellent condition and working order with all original finish, similar to Plate no. 41d; the Kaufmann model was the basis for the very successful series of break action Webley Government revolvers. *** Brl. 5½in.
- 29 A .450 Webley R. I. C. No. 1 1883 model nickel plated Police revolver ser. no. 70750, bearing the Webley trade mark of handcuffed hands and the letters M. P. This model was adopted

- Lot
- 29 (Cont'd) by the Metropolitan Police and other police forces in 1883, and in 1884 Henry Webley demonstrated to the police that remarkable accuracy could be obtained with this short barrelled weapon, minor plating wear, very good condition and working order, similar to Plate 38c. *** Brl. 2½ in.
- 30 An attractive .450 R. L. C. type solid frame revolver, plain cylinder, brass frame one piece chequered walnut grip with silver escutcheon, numbered 2 and stamped LPO7, very good condition and working order. *** Brl. 2½ in.
- 31 A rare .450/.455 Webley "Army Express" solid frame double action revolver ser. no. 87611 ovate barrel, marked P. Webley & Son, ejector rod and housing missing, otherwise very good condition and working order with most original blue, similar Plate 32a. *** Brl. 6 in.
- 32 A fine .455/.476 Webley MK.1 Service revolver ser. no. 38181, chequered hard rubber birds head grips, in its original oak case with label of Pape, Newcastle complete with key, turnscrew, cleaning rod and brush, oil bottle and cartridge block with 15 blank rounds, the entire lot in new condition, see Plate 50; this is a cased set as supplied to the civilian market. *** Brl. 4 in.
- 33 A .455/.476 Webley W. G. revolver 1882 model, with Pryse cylinder release, "church steeple" fluting on cylinder, chequered hard rubber birds head grips, retailed by E. M. Reilly & Co. ser. no. 1651, very good condition and working order with most original blue, see Plate 44a, in its oak case with cleaning rod, oil bottle and cartridge block, the whole in very good order, case escutcheon marked Capt. C. W. Davy R. E. *** Brl. 6 in.
- 34 A .442 1st Model Webley R. L. C. solid frame double action revolver ser. no. 17061, ovate barrel, plain cylinder with locking slots near front, chequered walnut one piece grip, excellent condition and working order with most original finish, see Plate 28d. *** Brl. 4¾ in.
- 35 An attractive .450 Webley R. L. C. solid frame, double action revolver ser. no. 16344, ovate barrel, cylinder without flutes and with locking slots near front, one piece chequered walnut grip, all major parts nicely engraved with fine scrolls, excellent condition and working order. *** Brl. 4¾ in.
- 36 A .442 1st Model R. L. C. Model solid frame revolver as in previous lot but one, ser. no. 12386, very good condition and working order, similar to Plate 28d. ***
- 37 An extremely rare .44 single action rim fire solid frame, 6 shot revolver, the design registered by P. Webley & Son in 1864, this is fitted on the right side with an unusual compound lever ejector, the lever stamped "Registered May 3rd", the cylinder pin has a simple push button release as seen on some percussion revolvers, left side of frame marked "Patent", octagonal barrel screwed into frame, plain cylinder with locking slots near front, loading gate pivoted at top and opening rearwards, two piece chequered walnut grips, dull steel finish, very good condition and working order, see Plate nos. 23 a and b, in a relined mahogany case with turnscrew. *** Brl. 6½ in.
- 38 A .450 No. 1 Wilkinson Pryse nickle plated hinged frame revolver made in Belgium and retailed by Wilkinson & Son, 27 Pall Mall, London, ser. no. 7223, double tong breech latch, tail of sear has small roller, one piece chequered walnut grip, London proved, very good condition and working order with most original nickle plate, see Plate 42c. *** Brl. 5½ in.

- Lot
- 39 A .455 Webley Pryse No. 4 hinged frame, nickle plated revolver ser. no. 2184, double tong breech latch, fluted cylinder, one piece chequered walnut grip, very good condition and working order with most original nickle plating, similar to Plate 40e. *** Overall 4½ in.
 - 40 A .450 nickle plated Pryse revolver ser. no. 1350, roller sear, plain cylinder with locking slots near front, retailed by Moore & Grey, one piece chequered grip. Marked on right side with a diamond containing "Patent 669", very good condition and working order with most original finish, see Plate 39f. *** Brl. 3 in.
 - 41 A .450/.455 Francotte-Pryse nickle plated revolver stamped 9 on breech face, plain cylinder with locking slots near rear, double tong breech latch, one piece chequered grip with silver escutcheon, very good condition and working order with most original finish, see Plate 39c. *** Brl. 3½ in.
 - 42 A fine nickle plated .450 Pryse revolver ser. no. 1752, roller sear, plain cylinder with locking slots near front, retailed by Alex Henry, marked "Patent 1104", excellent condition and working order with all original finish, see Plate 39e. *** Brl. 4 in.
 - 43 A .320 Horsley Pryse revolver marked Patent 6219, fluted cylinder, blued steel finish, one piece chequered walnut grip, very good condition and working order, see Plate 40c. *** Brl. 3 in.
 - 44 A fine .455 Webley No. 4 Pryse revolver, ser. no. 3364, retailed by Cogswell & Harrison, fluted cylinder, double tong breech latch, one piece chequered grip, excellent condition and working order with nearly all original commercial blue finish, see Plate 40e. *** Brl. 5 5/8 in.
 - 45 A .455 Webley Fosbery 1902 model automatic revolver ser. no. 2482, hard rubber chequered grips, near new condition and working order with nearly all original finish. *** Brl. 6 in.
 - 46 A scarce early .455 Webley Fosbery modified 1901 model automatic revolver ser. no. 304, one piece recoiling frame, chequered walnut grips with inlaid "SAFE", cylinder with fluted recesses at rear, excellent condition and working order, see Plate 55d. *** Brl. 6 in.
 - 47 A similar but very early modified 1901 model .455 Webley Fosbery automatic revolver, ser. no. 83, the cylinder with fluted recesses at rear and deepened grooves at front, marked P. Webley & Son, very good condition and working order, see Plate 54a. *** Brl. 6 in.
 - 48 A scarce .455 nickle plated Webley Fosbery 1901 target model automatic revolver ser. no. 799, chequered walnut grips, one piece recoiling frame, cylinder without fluted recesses, very good condition and working order with most original finish, see Plate 55b. *** Brl. 7½ in.
 - 49 An extremely rare and unique .455 Webley Fosbery 1901 model automatic revolver, ser. no. 1 no holster guides, cylinder rebated at rear with fluted recesses at front and deepened grooves at rear, the pin engaging the cylinder grooves fastened to the outside of the one piece recoiling frame, chequered walnut grips, no safety, marked "Fosbery Auto Revolver made by the Webley & Scott R. & A. Co. Ltd." excellent condition and working order, see Plates 54b and c. *** Brl. 6 in.

- Lot
- 50 A superb .455 Webley Fosbery 1902 target model automatic revolver ser. no. 2563, retailed by Wilkinson, special finger grip walnut grips with palm support and thumb rest, excellent condition and working order with nearly all original commercial blue finish, see Plate 53c.*** Brl. 7½ in.
- 51 A scarce .455 Webleys No. 4 Pryse revolver ser. no. 364, with special extractor release at front of frame, fluted cylinder, right frame latch lever missing, otherwise excellent condition and working order, see Plate 40a.*** Brl. 5½ in.
- 52 A .442 solid frame 6 shot Webley R. L. C. revolver ser. no. 78, front of frame streamlined, no ejector, cylinder with ratchet type locking notches, marked Webleys Patent, this is the earliest short barrelled R. L. C. type revolver made by Webley and is the British equivalent of the American "belly Gun", very good condition and working order with much original finish, see Plate 28a.*** Brl. 2 3/8 in.
- 53 A .22 R. F. 9 shot solid frame double action revolver, very good condition and working order, see Plate 24d.*** Brl. 5 in.
- 54 An attractive .44 R. F. Webley No. 2 solid frame nickle plated double action revolver, "The British Bull Dog" ser. no. 23642, frame, cylinder and guard fine scroll engraved, no flutes in cylinder, chequered two piece birds head grips, excellent condition and working order, see Plate 24c.*** Brl. 2½ in.
- 55 A .450, 6 shot Bengian R. L. C. 1880 model revolver ser. no. 379, plain cylinder with locking slots at rear, engraved on top strap "Royal Irish Constabulary" chequered one piece walnut grip, action slightly A. F. excellent condition, see Plate 34c.*** Brl. 2¾ in.
- 56 A .430 1880 model R. L. C. solid frame, double action revolver ser. no. 20631, trade mark of W. J. Hill and crown over R. L. C. ordnance marked, plain cylinder, one piece chequered grip, excellent condition and working order, see Plate 34a.*** Brl. 2½ in.
- 57 A .450 Webley M. P. Police model R. L. C. solid frame revolver, ser. no. 71363, bearing trade mark of handcuffed hands, one piece chequered walnut grip, excellent condition and working order, similar to Plate 38c.*** Brl. 2½ in.
- 58 A .450 nickle plated solid frame revolver no. 222, marked "The Tower Bulldog" and bearing the London Tower trade mark of David Bentley, Tower Street, Birmingham, retailed by Thomas Turner, chequered two piece walnut grips, excellent condition and working order with all original finish, see Plate 36c.*** Brl. 2¼ in.
- 59 A .320 Horsley Pryse revolver no. 703, with roller sear and plain cylinder with locking slots near front, marked Patent 1065, excellent condition and working order, see Plate 39b.*** Brl. 3¾ in.
- 60 A .450/.455 Webley 1904 W. S. Army Model hinged frame revolver ser. no. 122456, hard rubber grips with W. S. monogram, similar to the MK VI revolver in appearance, cam lever not correct and right grip chipped, very good condition and working order.*** Brl. 6 in.
- 61 A .455 Webley MK VI service revolver dated 1915, ser. no. 161034, very good condition and working order.*** Brl. 6 in.
- 62 A .450 6 shot R. L. C. revolver ser. no. 30676 retailed by Reilly, no ejector, streamlined

Lot

- 62 (Cont'd) front of frame, plain cylinder with ratchet locking stops, similar to Plate 28a but longer barrel, very good condition and working order with much original finish. *** Brl. 4in.
- 63 A most unusual .450 5 shot Pryse revolver with ovate barrel, retailed by Bonehill, no ser. no. chequered birds head walnut grips, fluted cylinder double tong breech latch, trigger spring A. F. otherwise very good condition with much original finish. *** Brl. 3 5/8in.
- 64 A .450 Webley No. 2 5 shot solid frame revolver, "The British Bull Dog" ser. no. 60743, lightly scroll engraved, originally nickle plated, two piece ivory birds head grips, most plating worn off, good condition and working order. *** Brl. 2 1/2in.

TOOLS, CASES, ACCESSORIES ETC.

- 65 A brass bound leather covered oak double tiered case for a pair of guns with 30in. barrels, lift out tray missing, no partitions and handle missing, good condition.
- 66 A brass bound leather covered oak double tiered case for a pair of guns with 28in. barrels, complete with lift out tray, no lining or partitions, good condition complete with label of Robert Ringer.
- 67 A mahogany gun case for a gun with 30in. barrels with an attractive beaded brass ring handle and lid escutcheon, no lining or partitions, good condition.
- 68 A mahogany case for an air cane gun, lid escutcheon and partitions missing and an oak cutlery case, good condition.
- 69 A Victorian portable davenport veneered in walnut with inset folding brass handles and brass escutcheons, interior missing, good condition.
- 70 A nice quality oak revolver case with brass lid escutcheon engraved T. A. Pill R. N. 11 5/8in. x 6 5/8in. internal and a small oak revolver case no partitions 7 3/4in. x 4 5/8in. internal, both very good condition.
- 71 A walnut veneered Victorian portable davenport, no interior, very good condition, and a leather shotgun cartridge magazine, lid damaged.
- 72 Five assorted powder cannisters, Chilworth Gunpowder Co., Halls, and Curtiss and Harvey, all good condition.
- 73 An ebony handled nipple key with pricker, a Tee handled sporting gun nipple key, and a striker key no handle, very good condition.
- 74 A small wooden case containing 10 wad punches including a massive 1 bore punch, excellent condition.
- 75 A fine combination tool for the Enfield percussion rifle incorporating oil bottle, turnscrews, wormer, pricker, mainspring cramp and nipple key marked on side Whitworth Enfield, broad arrow and 21/1/67, Enfield inspection stamped, in new condition, see Blackmore Plate 74, bottom right.
- 76 Three mainspring cramps for sporting guns, two of high quality and in new condition with all original colour hardening.

- Lot
- 77 Four double ended shot measures, three brass, one by Sykes, and one steel, together with four Lee Enfield oil bottles, three brass ordnance marked, and one bakelite, all good condition.
- 78 A Hiscock-Parker .22/.303 Lee Enfield rifle magazine, excellent condition.***
- 79 5 bullet cherries mounted on a card, 118 bore, two .410, 25 bore and 22 bore, all good condition, similar to Plate 68.
- 80 Approximately 250 flints in four sizes for pocket and holster pistols, sporting guns and muskets.
- 81 Approximately 50 flints, assorted.
- 82 An extremely rare ebony two piece bullet seater for reloading 15 m.m. pin fire cartridges; the cartridge is fitted into the base of the seater with case mouth uppermost and the top part of the seater is used to press the bullet into the case to the correct depth, excellent condition, together with a gunmetal .577 bullet/case crimping tool by Greenfield, London, excellent condition.
- 83 An interesting 16th or 17th century flint and steel set consisting of a small leather pouch with brass handle, rosettes and corner pieces, fitted on to a steel plate for striking the flint on, very good condition for age.
- 84 A small quantity of various sights for target rifles and revolvers and sporting rifles, all excellent condition.
- 85 Three Enfield percussion rifle hammers, an elaborate pin fire hammer, and two percussion sporting gun hammer blanks, a double set trigger unit, a pair of double percussion gun breech plugs, a Westley Richards monkey tail breech piece complete with lever and breech block, numbered A.96, and 10 assorted locks and lockplates, mostly very good to excellent, all in a leather case.
- 86 A good quality detached flintlock by Turtle with roller frizzen spring, engraved sunbursts etc., top jaw and screw and mainspring missing $4\frac{3}{4}$ in. long, and a left handed French flint lock complete, frizzen broken, both very good condition. $5\frac{1}{2}$ in. long.
- 87 A small box of assorted gun and firearm springs.
- 88 A nice brass bar pattern percussion cap dispenser by Sykes, double sided, excellent condition and working order, similar to Plate 75b. Overall $4\frac{3}{4}$ in.
- 89 A circular brass percussion cap dispenser, excellent condition and working order, similar Plate 75b. Dia. 2in.
- 90 A similar lot.
- 91 A circular brass percussion cap dispenser by Sykes with curved outlet, excellent condition and working order. Dia. $1\frac{7}{8}$ in.
- 92 A small circular german silver percussion cap dispenser, excellent condition and working order, see Plate 75b. Dia. $1\frac{1}{2}$ in.
- 93 A brass mounted horn flask for carrying percussion caps with spring lever closure, excellent condition and working order. see Plate 75b. Overall $7\frac{1}{2}$ in.
- 94 A most attractive display of 35 bronze miniature replicas of tools including hand vices, pliers, tongs, saws, planes, shears, anvil, calipers etc., all mounted on red velvet, excellent condition. $11\frac{1}{2}$ in. x $4\frac{3}{4}$ in.

- Lot
- 95 8 attractive casts of engravings cut by Joe Brown on W. & C. Scotts hammerless shotguns, see Plate 72.
 - 96 An extremely rare Pritchard-Greener bayonet for fitting to the Webley MK VI service revolver, one piece iron grip the top of which fits the front of the revolver cam lever and is locked in position by a spring loaded lever behind the rearsight, tapered T section blade, crossguard engraved Patent No. 17,143/16 and bears Greener trade mark of W. W. G. over an elephant, in its original sheath with leather frog and in new condition, the handle and guard having all original colour hardening, in a fitted wooden box, see Plate 52b. Blade 8½ in.
 - 97 A rare quick loading device for .450, .455 and .476 Webley W. G. Army revolvers, made of german silver and marked Major Watsons Patent 112 P. Webley & Son, attached by a chain to its metal lined leather carrying case to which it is fitted by a bayonet catch, with loop for belt attachment, excellent condition, see Page 177 and Plate 74a.
 - 98 A scarce quick loading device marked "Prideaux's Patent No. 22653/14 Revolver Magazine for Webley .455, Webley Fosbery, .455 Service Colt Smith & Wesson", in its leather case with belt loop, excellent condition, see Plate 74b.
 - 99 A similar lot, but without leather case, excellent condition.
 - 100 A fine and scarce boxwood bullet lubricating box in its leather carrier with belt loop, excellent condition, see Plate 74d.
 - 101 An interesting brass and steel 19th century gunsmiths adjustable caliper gauge made on micrometer principle, excellent condition, see Plate 67(9), and a pair of dividers excellent condition, Plate 67 (11).
 - 102 A fine quality combination brass bullet mould and reloading tool made by W. Bartram, under the Nimrod trade mark, consisting of a single cavity mould for a .440 revolver bullet, sprue cutter, capper, decapper and bullet crimper and seater, leather bound handles, see Plate 71a, and a brass 12 bore cartridge case extractor, both excellent condition.
 - 103 A 19th century gunsmiths Bow drill complete with belly pad and drill chuck, very good condition, see Plate 67(8)
 - 104 A quantity of assorted gun and pistol screws, some pistol and revolver grips and some cleaning jags, brushes, mops etc.
 - 105 A Hawksley rifle case white metal oil bottle, a fine polished and faceted steel oil bottle, a brass oil bottle, a german silver powder flask nozzle, and an Enfield snap cap and chain, all in excellent condition.
 - 106 A rare and massive single cavity brass mould for casting a 3 bore round ball, fitted with steel sprue cutter marked W. D. (William Davis) excellent condition, see Plate 73d (2) probably used for large bore big game guns during the 19th century.
 - 107 A brass 6 ball, 88 bore gang mould with iron sprue cutter marked W. D. good condition and working order, see Plate 73b.

Lot

- 108 A pair of cast mould blocks for a single cavity round ball iron pincer mould for 16 - 18 bore, see Plate 73d(7)
- 109 A brass 20 ball, 40 bore gang mould by Parkes Birmingham and stamped with a crown, wooden handles (new), very good condition and working order, stated by Major Dowell to have been used for casting balls for rifles on Victorian fun fair ranges.
- 110 A single cavity brass mould for casting a conical 17 bore (.650) bullet with two small wings, for a two groove rifle, steel sprue cutter, marked J. G. (J. Greenfield), very good condition.
- 111 A fine quality single cavity gunmetal mould for a 37 bore (.500") conical bullet with two wings for a two groove rifle, numbered 4709 and engraved "H. Des Voeux Esqre", early type mould without sprue cutter and with conical pouring gate, wash leather bound handles, excellent condition.

PIN FIRE WEAPONS

- 112 A good quality 12 m. m. 6 shot double action pin fire revolver by Lefauchaux ser. no. 134719, rounded butt with lanyard ring, loading gate missing, action slightly A. F. very good condition. Brl. 6in.
- 113 An attractive 9 m. m. 6 shot nickle plated double action pin fire revolver, the cylinder engraved with scrolls and with horse and human figures, frame, barrel and guard profusely engraved overall with scrolls and flowers, the grip deeply carved with flowers and leaves, action slightly A. F. very good condition. Brl. 6½in.
- 114 A rare and massive 15 m. m. 7 shot solid frame nickle plated double action pin fire revolver no. 733, round barrel, rounded butt with lanyard ring and chequered two piece walnut grips, this revolver is loaded by pulling forward a handle under the barrel which releases the cylinder, the latter retained to the pistol by a length of ball chain, excellent condition and working order, this is one of the largest revolvers ever made and compares with the .577, see Plate 22b. Brl. 6¾in.
- 115 A scarce 9 m. m. 12 shot pin fire double action revolver with loading gate and rod ejector on right, ser. no. 11051, rounded butt with lanyard ring, refinished, good condition and working order, see Plate 22c. Brl. 6in.
- 116 A nice quality 9 m. m. 6 shot pin fire pepperbox self cocking revolver with folding trigger, lightly scroll engraved, rounded chequered butt with screwed in ejector rod, excellent condition and working order with much original finish, see Plate 21d. Brl. 2½in.
- 117 A magnificent 9 m. m. 6 shot double action pin fire revolver, the barrel, frame, ejector, cylinder, loading gate and guard all of gunmetal, the frame, barrel breech and guard beautifully scroll engraved, round barrel, plain cylinder with ratchet stops, the trigger, hammer, foresight, lanyard ring and screws heat blued, chequered walnut rounded butt; Gunmetal is an alloy of copper, tin and zinc, has a richer appearance than brass and is a superior material. This pistol was formerly the property of a Captain in the Merchant Navy and was presumably designed for sea service, in its original mahogany case with a tin of blanks, oil bottle and cleaning rod, the whole in very fine condition and the pistol in excellent working order, see Plate 21f. Brl. 6½in.
- 118 A most unusual 9 m. m. 6 shot self cocking open frame pin fire revolver which appears to have been converted from a Webley/Bentley type percussion revolver, barrel wedged to cylinder pin, spring half cock safety on left, pronounced "prawl" at top of grip, chequered

Lot

- 118 (Cont'd) two piece walnut grip, scroll engraved frame, excellent condition and working order, see Plate 21e, in its fitted oak case. Brl. 4½in.
- 119 An extremely rare 7 m.m. 6 shot solid frame double action pin fire revolver with folding trigger, formerly in the Eschwege collection. This revolver is of particular interest as it has a swing out cylinder which is released by pulling the cylinder pin forward, also there is a spring loaded steel block carrying the ratchet and stops which is hinged to the rear of the cylinder; when the cylinder is swung out to the right the block flies back exposing the chambers for loading, action slightly A. F. good condition and working order, see Pages 41 and 42 Webley Story & Plate 22a. Brl. 3¼in.
- 120 A 9 m.m. double barrelled pin fire pistol with breech release lever under forend, scroll engraved, fluted butt, some light pitting, similar to illustration in an old P. Webley & Son catalogue, see Plate 22d, good condition and working order. Brl. 2 7/8in.

CENTRE & RIM FIRE PISTOLS AND REVOLVERS

- 121 A .450 Pryse 6 shot hinge frame revolver retailed by "Kerr & Co. 118, Queen Victoria St., London" extractor release at front of frame, double tong breech latch, one piece grip, no. 142, very good condition, cylinder rotation slightly A. F. *** Brl. 5½in.
- 122 A pair of 7 m.m. Belgian rim-fire tip up breech saloon pistols ser. nos. 6656 and 6657 octagonal barrels with trigger type releases, chequered grips, similar to Plate 26c, very good condition and working order. *** Brl. 8¼in.
- 123 A solid frame Belgian .38 6 shot long barrelled revolver with octagonal barrel ser. no. 4387 chequered two piece walnut grips, action slightly A. F. and loading gate missing, very good condition. *** Brl. 9in.
- 124 A nickle plated Webley MK. III .38 cal. hinge frame pocket revolver, ser. no. 6074, chequered hard rubber grips, action A. F. good condition. *** Brl. 3in.
- 125 A .455/.476 Webley No. 4 Pryse revolver ser. no. 10676, fitted with a .297/.230 C. F. Morris Tube single shot adaptor, the revolver extractor mechanism operates the adaptor extractor, double tong breech latch, one piece chequered walnut grip, action slightly A. F. excellent condition with nearly all original commercial blue, see Plate 58a. *** Adaptor Brl. 10½in.
- 126 A Webley & Scott MK. III brass flare pistol with belled muzzle ser. no. 72945, guard missing, otherwise good condition and working order. *** Brl. 5½in.
- 127 A Webley & Scott No. 2 MK. I British service flare pistol dated 1918, ser. no. 37433, massive barrel, excellent condition and working order. *** Brl. 4in.
- 128 A fine .455/.476 Webley-Kaufmaun No. 2 model nickle plated, hinge frame revolver ser. no. 810, fluted cylinder with reinforced buttress at rear, chequered walnut two piece birdshead grips, engraved under barrel Lieut Barnett Scotts Guards excellent condition and working order with all original plating, see Plate 41c. *** Brl. 5¾in.
- 129 A rare and interesting .450 Webley-Kaufmaun No. 1 model hinge frame revolver with thumb stud breech latch ser. no. 468, the left side of the action cut away for

Lot

- 129 (cont'd) demonstration purposes so that the action may be observed, chequered walnut two piece birdshead grips, not rifled excellent condition and working order see Plate 41b. *** Brl. 5 $\frac{3}{4}$ in.
- 130 A .476 Webley-Kaufmann No. 2 model hinge frame revolver no. 430, thumb lever barrel latch, fluted cylinder, chequered walnut two piece birds head grips, front of extractor housing and lanyard ring missing, very good condition and working order. *** Brl. 5 $\frac{3}{4}$ in.
- 131 A scarce .450/.455 Webley New Model Army Express solid frame double action revolver, ser. no. 4686, screwed in octagonal ribbed barrel with Colt type sliding rod ejector on right, fluted cylinder, chequered walnut two piece birds head grips, excellent condition and working order with most original commercial blue finish, see Plate 35c. *** Brl. 5 $\frac{1}{2}$ in.
- 132 A .455 Webley MK. 1, 1887 model hinge frame British service revolver ser. no. 679, hard rubber chequered birds head grips, ordnance marked, very good condition and working order similar to Plate 48e. *** Brl. 4in.
- 133 A similar revolver, but nickle plated, ser. no. 28326, left grip chipped and cylinder assembly retaining screw missing, very good condition and working order. ***
- 134 A .455 Webley MK. 11 1894 model British service hinge frame revolver with cavalry hammer, ser. no. 47370, chequered hard rubber birds head grips, ordnance marked, trigger return slightly A. F. very good condition, similar to Plate 48c. *** Brl. 4in.
- 135 A .450/.455 Webley MK. IV 1899 Boer War Model service revolver ser. no. 125669, chequered hard rubber birds head grips, excellent condition and working order, see Plate 48b. *** Brl. 4in.
- 136 A .455 Webley MK. V 1913 model British service revolver ser. no. 136216, dated 1914, chequered hard rubber birds head grips, some light pitting, good condition and working order, see Plate 51d. *** Brl. 4in.
- 137 An unusual Webley .297/.230 Morris MK. IV revolver fitted with special stepped down cylinder and 6in. barrel, ser. no. 119399, chequered hard rubber, birds head grips, very good condition and working order, see Plate 58e. ***
- 138 A similar revolver chambered for .297/.230 Morris cartridges, ser. no. 119400, grips, latch spring, striker and cam lever missing, good condition, and a similar revolver with 4in. barrel ser. no. 119264 very good condition and working order. ***
- 139 A .455 Webley MK. IV revolver, ser. no. 93508 fitted with a .22 R. F. 6 shot Parker Hale adaptor consisting of rifled tube, rearsight and cylinder, excellent condition and working order with its .455 cylinder, see Plate 57c. *** Brl. 4in.
- 140 A .455 Webley MK. VI hinge frame service revolver Model 1915, manufactured at the Royal Small Arms Factory, Enfield, dated 1923, ser. no. 9477, ordnance marked and with Enfield manufacturing mark, chequered vulcanite grips, near new condition and working order, see Plate 51a. *** Brl. 6in.
- 141 A similar weapon dated 1925 near new condition and working order, ser. no. A.1804. ***
- 142 A .476 Webley MK. III hinge frame revolver ser. no. 101, commercial blue finish fitted with replacement plain walnut birds head grips, excellent condition and working order with most original blue. *** Brl. 6in.

Lot

- 143 A .320 6 shot Webley nickle plated 1898 hammerless pocket model revolver with chequered vulcanite grips incorporating W. P. monogram, ser. no. 265, very good condition and working order with much original plating, see Plate 43c. *** Brl. 3in.
- 144 A .455 Webley MK. VI, model 1915 revolver made at Enfield, dated 1923, ser. no. 8438, ordnance marked, new condition and working order, see Plate 51A. *** Brl. 6in.
- 145 A .455 Webley MK. VI service revolver ser. no. 338629, dated 1918, very good condition and working order in its holster. *** Brl. 6in.
- 146 A superb .450/.455 Webley 1896 model "W. G." Target revolver, ser. no. 8338, german silver foresight blade adjustable for elevation and stamped 20yds. rearsight with lateral adjustment, flared butt with chequered walnut grips, some bore erosion otherwise excellent condition and working order with nearly all original commercial blue finish, in its fitted oak case with special stepped and fluted cylinder for .297/.230 cartridges together with its matching rifled barrel liner, (bore excellent), also three alternative rearsight elements, cartridge block, cleaning rods, oil bottle, plated foresight protector and makers instruction label in lid, the whole in excellent condition. *** Brl. 7½in.
- 147 A most attractive .450 1883 model R. I. C. revolver ser. no. 33665, beautifully engine turned and nickle plated overall except for small panels containing the markings, engraved on barrel Silver & Fletcher's Patent "The Expert", and on top strap S. W. Silver & Co. Cornhill, London, fitted with Silver & Fletchers patent case ejector and safety device, one piece chequered walnut grip, near new condition and working order, in its oak case with cartridge block excellent condition, see Plate 34d. *** Brl. 4½in.
- 148 An early .32 six shot solid frame double action revolver with folding trigger, plain cylinder, ejector rod screwed into butt ser. no. 86, cylinder pin not original otherwise very good condition and working order, in its oak case with cartridge block. *** Brl. 3½in.
- 149 A .442 Webley six shot solid frame double action revolver ser. no. 2137, early pattern with spring safety on left, plain cylinder with ratchet stops, ejector rod screwed into butt, retailed by Blanch & Son, excellent condition and working order with nearly all original blue, in its walnut veneered case with retailer's label in lid and containing oil bottle, cleaning rod and cartridge block, the whole in excellent order, see Plate 31f. *** Brl. 5in.
- 150 A very rare .455 Webley MK. III model 1897 British Government revolver ser. no. 746, this was the first Webley service revolver to have been fitted with the cam cylinder release, superceded in 1899 by the MK. IV, chequered vulcanite birds head grips, very good condition and working order, in its original carton with instruction label, see Plate 48a. *** Brl. 4in.
- 151 A .450 Webley No. 4 Pryse revolver ser. no. 2298, nickle plated overall, fluted cylinder, double tong breech latch, one piece chequered walnut grip, fine condition and working order, in its original oak fitted case with label of P. Webley & Son and containing cartridge block with 18 blank rounds, oil bottle, cleaning rod and turnscrew, the whole in excellent order except for lid escutcheon missing, see Plate 37a. *** Brl. 4in.
- 152 A .450 Webley No. 1 R. I. C. 1880 model solid frame double action revolver ser. no. 34714, plain cylinder with locking grooves, retailed by Trulock and Harris, Dublin, one piece chequered walnut grip, excellent condition and working order with most original finish, see Plate 31b. *** Brl. 2½in.

Lot

- 153 A .450 Webley R. L. C. Police model solid frame revolver ser. nos. 1999 and 98183 with handcuffed hands trade mark over the letters M. P., marked N. S. W. Police, fluted cylinder chequered one piece walnut grip, excellent condition and working order with most original finish, see Plate 38c. *** Brl. 2½in.
- 154 A .455 Webley MK. VI British service revolver ser. no. 239790, dated 1916, fitted with a detachable wooden shoulder stock as used on parachute flare pistols, numbered 22963, this stock has an iron hand grip which acts as one grip cheek, the other loose cheek being of chequered bronze, very good condition and working order, see Plate 52a. *** Brl. 6in.
- 155 A Mark IV .38, 145/200 Webley Police and Military model hinged frame revolver, chequered walnut square grips, ser. no. 43567, excellent condition and working order, in its original carton with instruction label, see Plate 47c. *** Brl. 5in.
- 156 A similar revolver ser. no. 42724 but fitted with target sight and 4" barrel, chequered vulcanite grips, excellent condition and working order, in its original carton with instruction label, see Plate 47b. ***
- 157 A Webley & Scott No. 1 MK. I Parachute Flare pistol, ser. no. 12839, dated 1917, fitted with its original matching numbered detachable wooden shoulder stock, very good condition and working order. *** Brl. 10in.
- 158 A rare .476 Webley No. 1 R. L. C. 1883 model solid frame double action revolver ser. no. 22027, ovate barrel, fluted cylinder, one piece chequered walnut grip, fitted with a blued steel skeleton shoulder stock which dovetails into the butt cap, excellent condition and working order, see Plate 22b. *** Brl. 6in.
- 159 An extremely rare .476 Webley single action Army Express solid frame double action revolver as issued to the Cape Mounted Rifles (Colonial) in 1881. Major Dowell states on page 74 that only two such revolvers have come to his notice, solid frame with screwed in barrel, sliding rod Colt type ejector, ser. no. 4776, very good condition and working order, see Plate 35e. *** Brl. 5½in.
- 160 A .455/.476 Webley Kaufmann No. 2 model nickel plated hinge frame revolver ser. no. 393, thumb lever latch, chequered walnut birds head grips, very good condition and working order with most original plating, see Plate 41d. *** Brl. 5¼in.
- 161 A rare .577 6 shot solid frame double action revolver retailed by Rodda & Co. ser. no. 406, barrel marked "1 Inch - 577 Boxer" clover leaf style cylinder with detachable breech plate which has to be removed for loading, chequered one piece walnut grip, slight pitting on cylinder, excellent condition and working order with much original blue, see Plate 29. *** Brl. 4in.
- 162 A .455/.476 Webley Wilkinson Pryse No. 3 model hinge frame revolver ser. no. 8741, engraved Wilkinson name and address on barrel, double tong breech latch, fluted cylinder, chequered one piece walnut grip, re charcoal blued, very good condition and working order, see Plate 42a. *** Brl. 6in.
- 163 A rare "in the white" prototype for the .455/.476 Webley Wilkinson Pryse No. 3 model revolver, the frame bearing file marks and grip not finished, excellent condition and working order, see Plate 42d. *** Brl. 6in.

Lot

- 164 A .38 Webley MK. IV Police and Military hinged frame revolver ser. no. A. 77170, chequered vulcanite grips with Webley name, new condition and working order in its original carton with instruction label, see Plate 47e. *** Brl. 4in.
- 165 A .38 Webley MK. III pocket model hinged frame revolver ser. no. 11082 with flat faced hammer and floating striker, chequered vulcanite grips, excellent condition and working order with most original finish, similar to Plate 49d., in its original carton with instruction label. *** Brl. 3in.
- 166 A scarce .45 6 shot double action revolver ser. no. 151 patented by John Piddington for Albert Spirlet (Patent No. 2107, July 27, 1870), this has a frame hinged at the top of the standing breech and an extractor operated by striking a bolt like handle, barrel sawn off otherwise very good condition and working order, see The Revolver by Taylerson, page 251 for description. ***
- 167 A scarce brass Pistol safety fuse MK. II 1880 model, issued to Royal Engineers and Royal Navy for igniting fuse for blasting etc; this fires a special centre fire cartridge which is contained within a hinged breech block, belt hook on left, one piece chequered walnut grip, knurled barrel, ser. no. 254, very good condition and working order, see Plate 59a. ***
- 168 A pair of .455 Webley W. S. Target model revolvers ser. nos. 450805 and 450806, adjustable sights, square butts with chequered walnut grips, and with spare vulcanite grips, refinished, very good condition and working order, in a box. *** Brl. 7½in.
- 169 A pair of .455 Webley MK. VI service revolvers ser. nos. 455220 and 455221, new condition and working order. *** Brl. 6in.
- 170 A .450 Webley 1889 model W. G. revolver, ser. no. 2072 "church steeple" fluted cylinder, the frame, latch, hammer and trigger all silver plated, fitted ivory grips, flared butt very good condition and working order similar to Plate 44e, in its fitted oak case with oil bottle, cleaning rod, case key and cartridge block containing 20 blank rounds, the whole in very good order. *** Brl. 6in.
- 171 A .22 R. F. single shot 1910 model Webley target pistol ser. no. 1787 near new condition and working order in its fitted oak case with key, see Plate 57a. *** Brl. 9⁷/₈in.
- 172 An early .360 five shot solid frame double action revolver marked Webleys Patent ser. no. 582 round tapered barrel, plain cylinder with grooved stops, fitted with compound lever ejector on right and rearward opening loading gate, one piece chequered walnut grip, excellent condition and working order with most original deep charcoal blue finish see Plate 31e., in its fitted oak case with oil bottle and cleaning rod. *** Brl. 4½in.
- 173 A very attractive .410 6 shot R. I. C. type solid frame double action revolver ser. no. 5, brass frame beautifully fine scroll engraved overall with screwed in blued steel ovate barrel, plain cylinder with locking grooves, one piece chequered walnut grip with silver escutcheon, excellent condition and working order with most original blue, in its fitted oak case with oil bottle, cleaning rod, and 7 rounds of ammunition. see Plate 31a *** Brl. 2½in.
- 174 A .450 Webley W. G. model 1892 target revolver with cam lever cylinder release "church steeple" fluted cylinder and flared butt with ivory grips, ser. no. 4197, reblued very good condition and working order, see Plate 44c., in its fitted oak case with .22 R. F. W. G. single

- Lot
- 174 (Cont'd) shot adaptor unit, oil bottle, cleaning rod, 25 blank rounds, and original instruction label, the whole in very good order. *** Brl. 7½ in.
- 175 An unusual .22 R. F. Webley & Scott Mark VI revolver; special model for target practice by Service personnel, round barrel and short cylinder, ser. no. 452902, chequered vulcanite grips, new condition and working order, see Plate 51b, in a mahogany box. *** Brl. 6½ in.
- 176 A .455 Webley Fosbery 1914 Target model automatic revolver, adjustable rearsight, chequered two piece walnut grips with inlaid "SAFE" excellent condition and working order, see Plate 52a, in a relined oak case with oil bottle, cleaning rod and lanyard. *** Brl. 7½ in.
- 177 A .38 Webley MK, II nickle plated standard hammer pocket model revolver, ser. no. 4 chequered walnut birds head grips, very good condition and working order, in its fitted oak case with cartridge block, similar to Plate 49b, *** Brl. 4 in.
- 178 A .455 Webley No. 1 New Model 1882 R. L. C. solid frame revolver, ser. no. 6807, fluted cylinder, one piece chequered walnut grip, excellent condition and working order, see Plate 24e, in its fitted oak case with oil bottle, ebony handled turncrew, key, cleaning rod and 18 blanks, the whole in excellent order. *** Brl. 4½ in.
- 179 A .380 Webley MK, II pocket model revolver with flat faced hammer and floating striker, ser. no. 297, chequered vulcanite birds head grip, in its fitted oak case with key, very good condition and working order, see Plate 49a. *** Brl. 4 in.
- 180 A .320 five shot nickle plated Pryse revolver with folding trigger ser. no. 5070, marked on left side Pryse's Patent The Original (Regd.) together with No. 1 and a trade mark, "Cartridge Brand", double tong barrel latch, one piece ivory grip, excellent condition and working order, see Plate 29d, in its walnut veneered case, very good condition. *** Brl. 2¼ in.
- 181 A fine .455/.476 nickle plated Webley Wilkinson Pryse No. 2 model revolver ser. no. 774, fitted with extractor release to permit inspection of chambers without extracting, roller sear fluted cylinder, double tong breech latch, chequered one piece walnut grip with silver escutcheon engraved with B. B. T. monogram, engraved on barrel "Presented to Major B. B. Twyne 1st Battn. Somerset Lt. Infy By Colonel Luttrell & Officers 2nd Volunteer Battn. Somerset Lt. Infy. November 82", in its fitted oak case with label of Thomas Horsley & Son, the whole in excellent condition and working order, see Plate 42b. *** Brl. 5¼ in.

BOOKS AND MAGAZINES

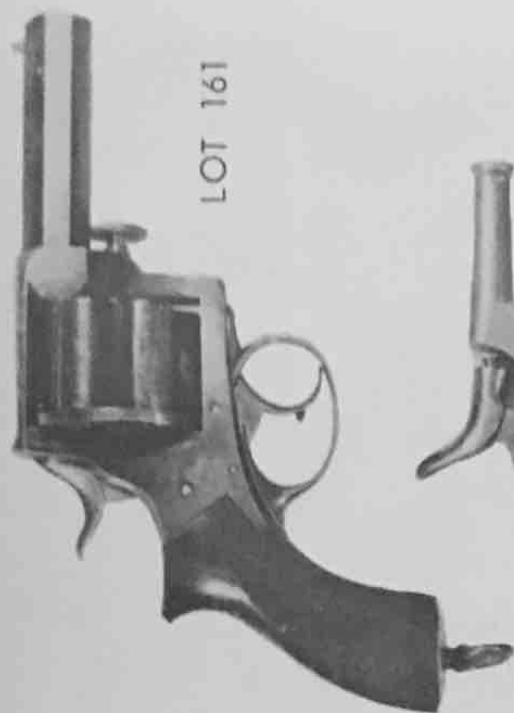
All books marked on flyleaf with Major Dowell's name.

- 182 "European Hand Firearms of the 16th, 17th and 18th Centuries" by Jackson & Whitelaw, 2nd edition 1959, 108 large pages, profusely illustrated with half tones of Wheellocks, Snaphances etc. including Scottish firearms, a classic work in excellent condition with dust jacket.
- 183 "The Story of Colts' Revolver", The Biography of Col. Saml. Colt, by "Wm. B. Edwards" with authors compliments to Major Dowell dated June 2, 1955 on flyleaf, 470 large pages profusely illustrated with superb half tones of all Colt percussion arms and with patent specifications, documents, etc. a mine of information, excellent condition with dust jacket.

- Lot
- 184 "Civil War Guns" by Wm. B. Edwards with authors compliments, 444 large pages profusely illustrated and dealing exhaustively with the subject, excellent condition with dust jacket.
 - 185 "The Luger Pistol" by Fred. A. Datig, 208 pages dealing with all models of this weapon many illustrations, excellent condition and dust jacket.
 - 186 "Antique Pistol Collecting" by Frith & Andrews, 122 large pages with 25 superb illustrations of pistols and revolvers, excellent condition with dust jacket.
 - 187 "Textbook of Automatic Pistols" by R. K. Wilson 1943, with a section on Sub-Machine Guns, 349 pages with many half tone illustrations, very good condition with dust jacket (rubbed)
 - 188 "A History of Firearms" 1926 by Major H. B. C. Pollard, 320 pages, well illustrated and with a long listing of names and dates of British Gunmakers, very good condition and one of the older classics.
 - 189 "The Book of The Pistol and Revolver" by Captain H. B. C. Pollard 1917, 230 pages, well illustrated with appendices on proof and makers marks etc. good condition.
 - 190 "Mauser Rifles & Pistols" 1947 by W. H. B. Smith 226 pages, profusely illustrated, very good condition with dust jacket, edges paper bound.
 - 191 "Remington Handguns" by Karr & Karr 1947 125 pages profusely illustrated with many full page plates, very good condition with dust jacket.
 - 192 "Mannlicher Rifles & Pistols" by W. H. B. Smith 1947, 229 pages profusely illustrated with line drawings, very good condition with dust jacket.
 - 193 "English Pistols & Revolvers" by J. N. George published 1938, a standard reference work, this is the highly desirable first edition; 256 pages with many half tone plates of flintlock and percussion pistols, revolvers etc., with an added large illustration of a Webley Longspur revolver, very good condition.
 - 194 "English Guns and Rifles" by J. N. George 1947, the companion work to the above, finished by Basil Haw, after George's death, 244 pages with many superb illustrations, a standard reference work, excellent condition with dust jacket.
 - 195 "The N. R. A. Book of Small Arms Vol. 1 Pistols and Revolvers" by W. H. B. Smith 1946, first edition, 628 pages, an exhaustive work dealing with all modern pistols and revolvers, lavishly illustrated and with many ghost views of pistol actions, very good condition with dust jacket edges paper bound.
 - 196 Firearms Curiosa, first edition 1956, by Lewis Winant, 281 pages, profusely illustrated excellent condition with dust jacket.
 - 197 "Arms and Armament" by Charles F. Foulkes 1945, a survey of all British military weapons, swords, lances, bayonets, rifles, machine guns etc. 158 pages well illustrated with photographs and line drawings, excellent condition with dust jacket.
 - 198 "British Pistols and Guns" by Ian Glendenning 1951, lavishly illustrated with superb photographs and detailed descriptions of flintlock and percussion arms, with a listing of Gunmakers 195 pages of art paper, excellent condition with dust jacket, torn.



LOT 114



LOT 161



LOT 275



LOT 3



LOT 387



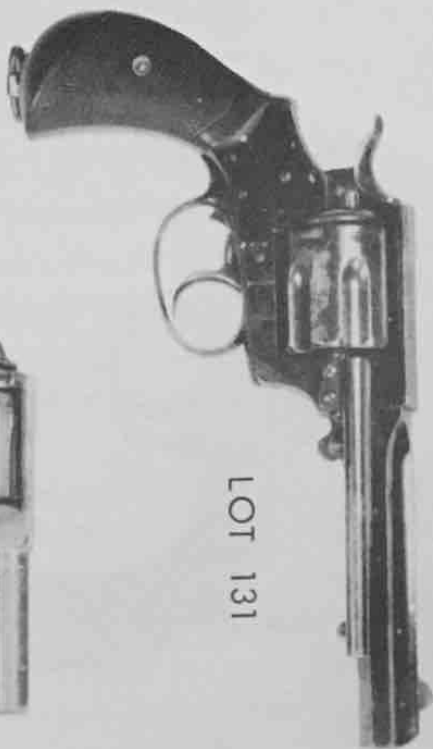
LOT 12



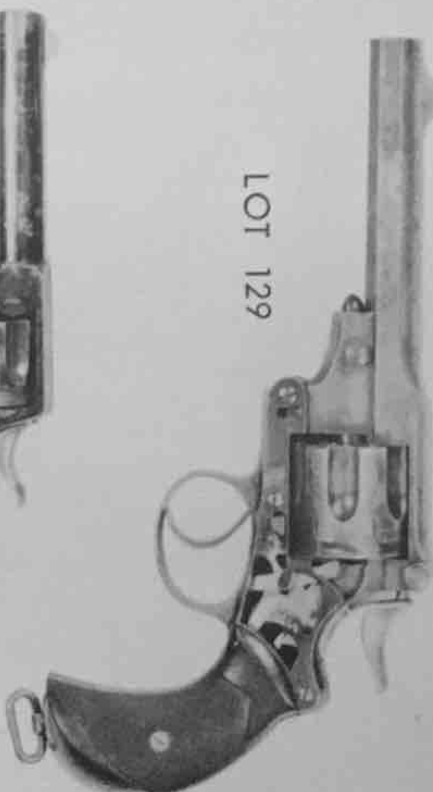
LOT 159



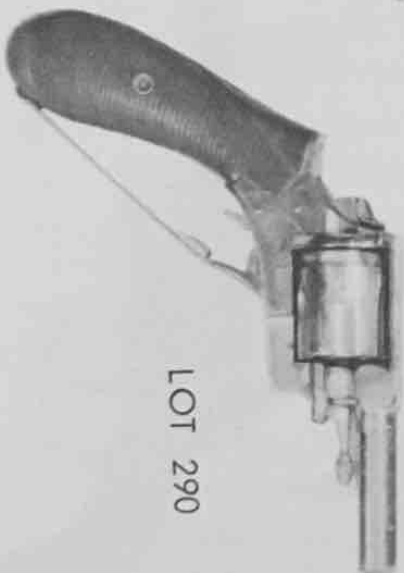
LOT 271



LOT 131



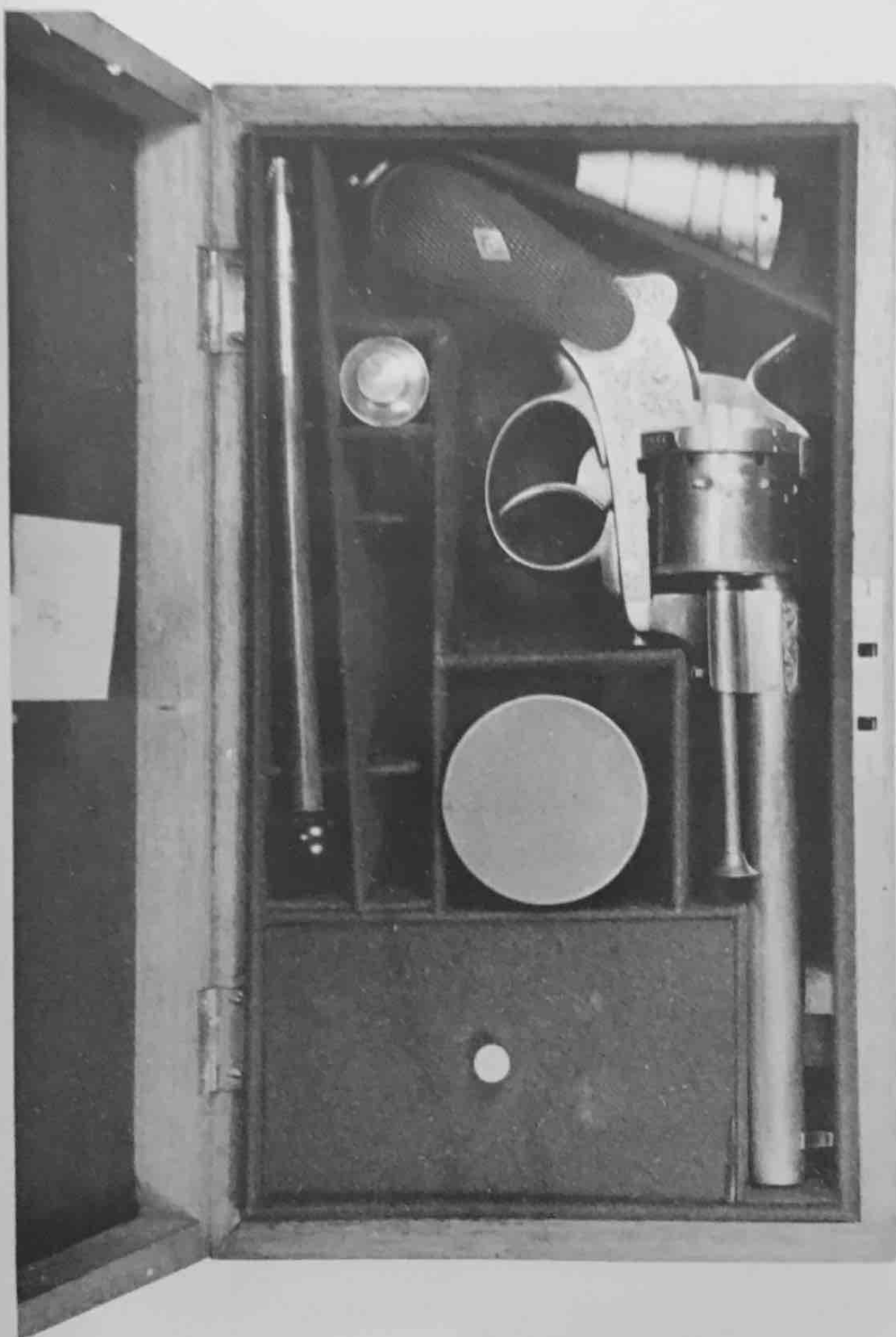
LOT 129



LOT 290



LOT 378

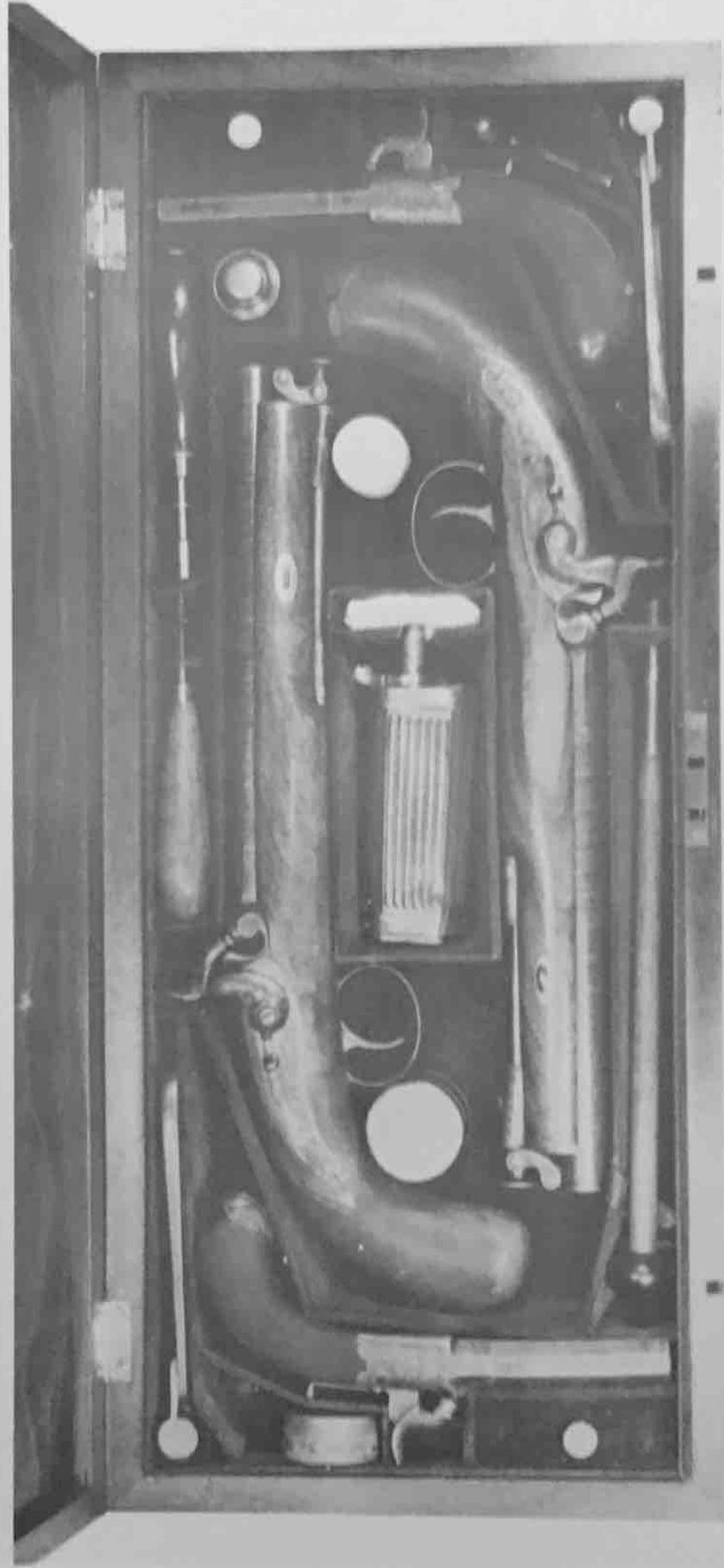


LOT 117

LOT 392

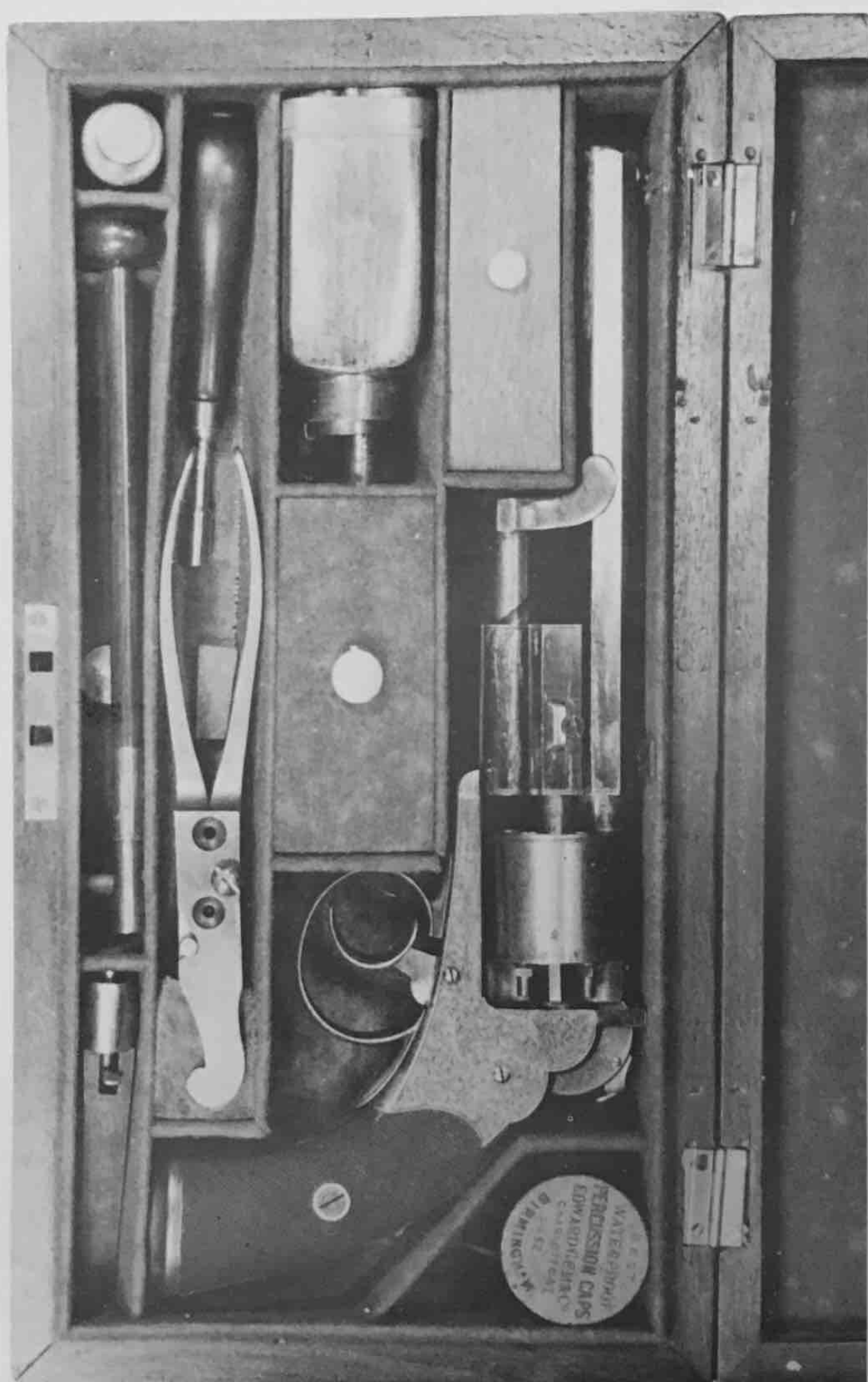


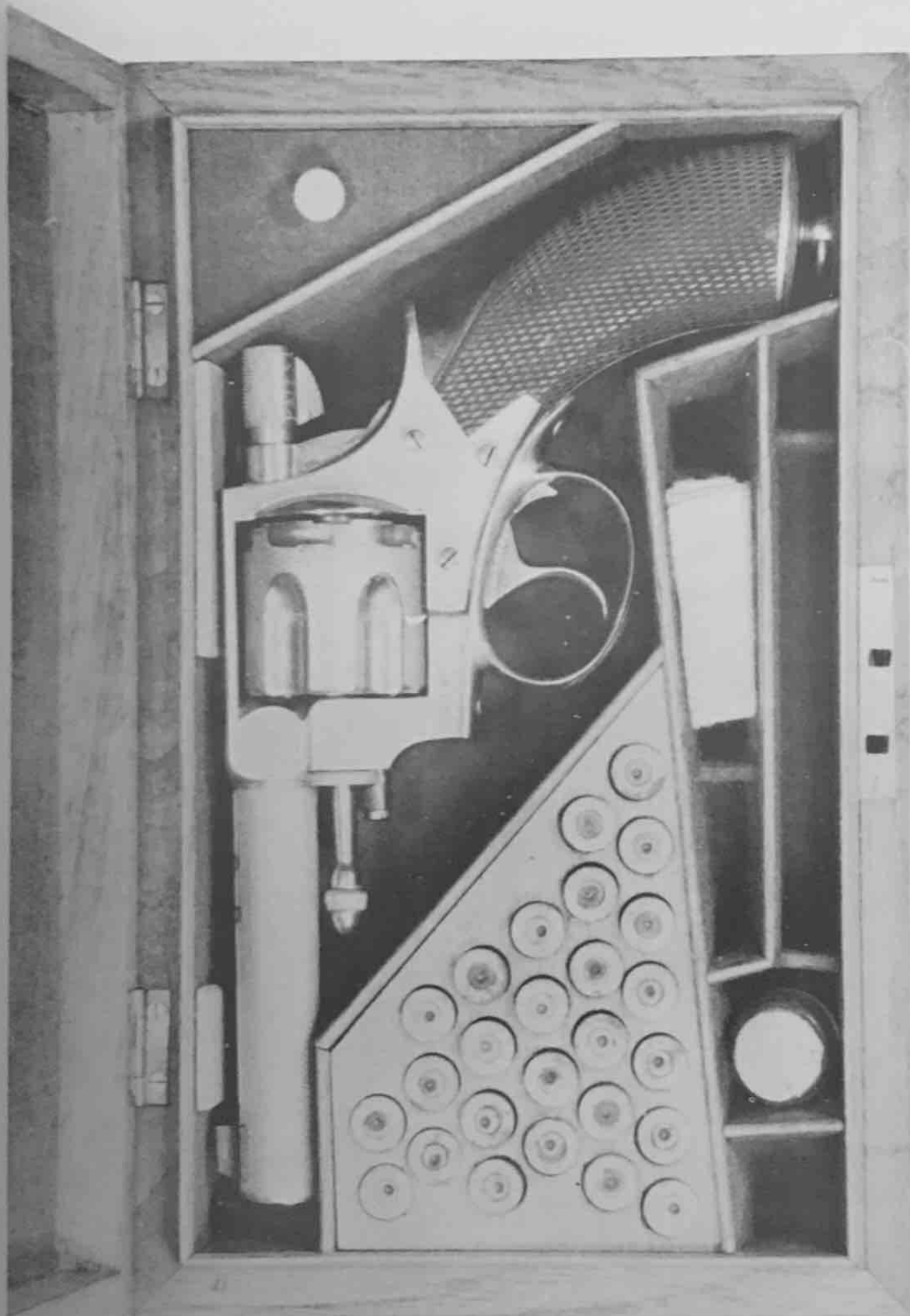
THE FINEST MEDICAL & DENTAL INSTRUMENTS
OF GEORGE ST. BARNES
AT ST. JAMES' STREET
LONDON



LOT 400

LOT 11

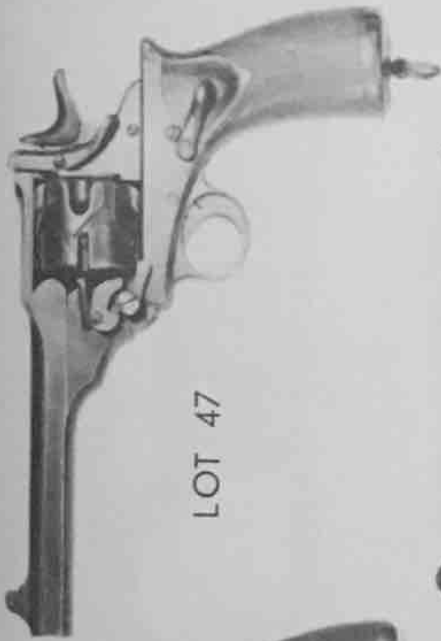




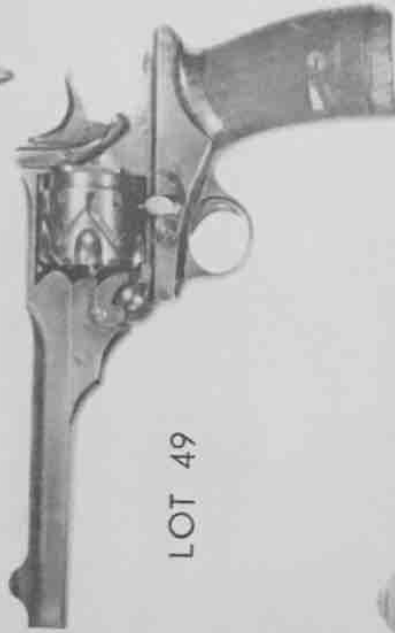
LOT 147

LOT 15





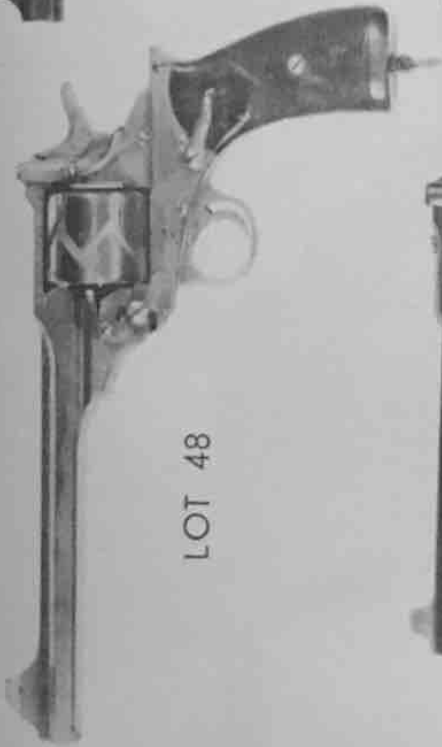
LOT 47



LOT 49



LOT 46



LOT 48



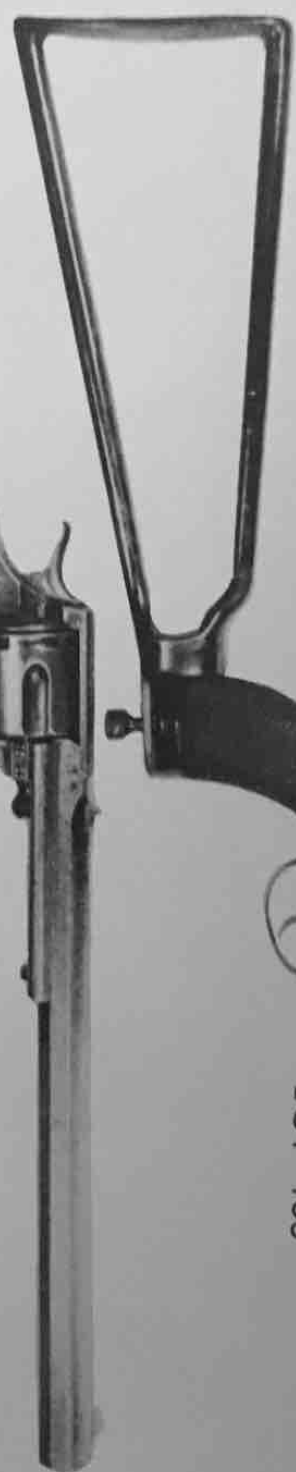
LOT 381



LOT 50



LOT 154



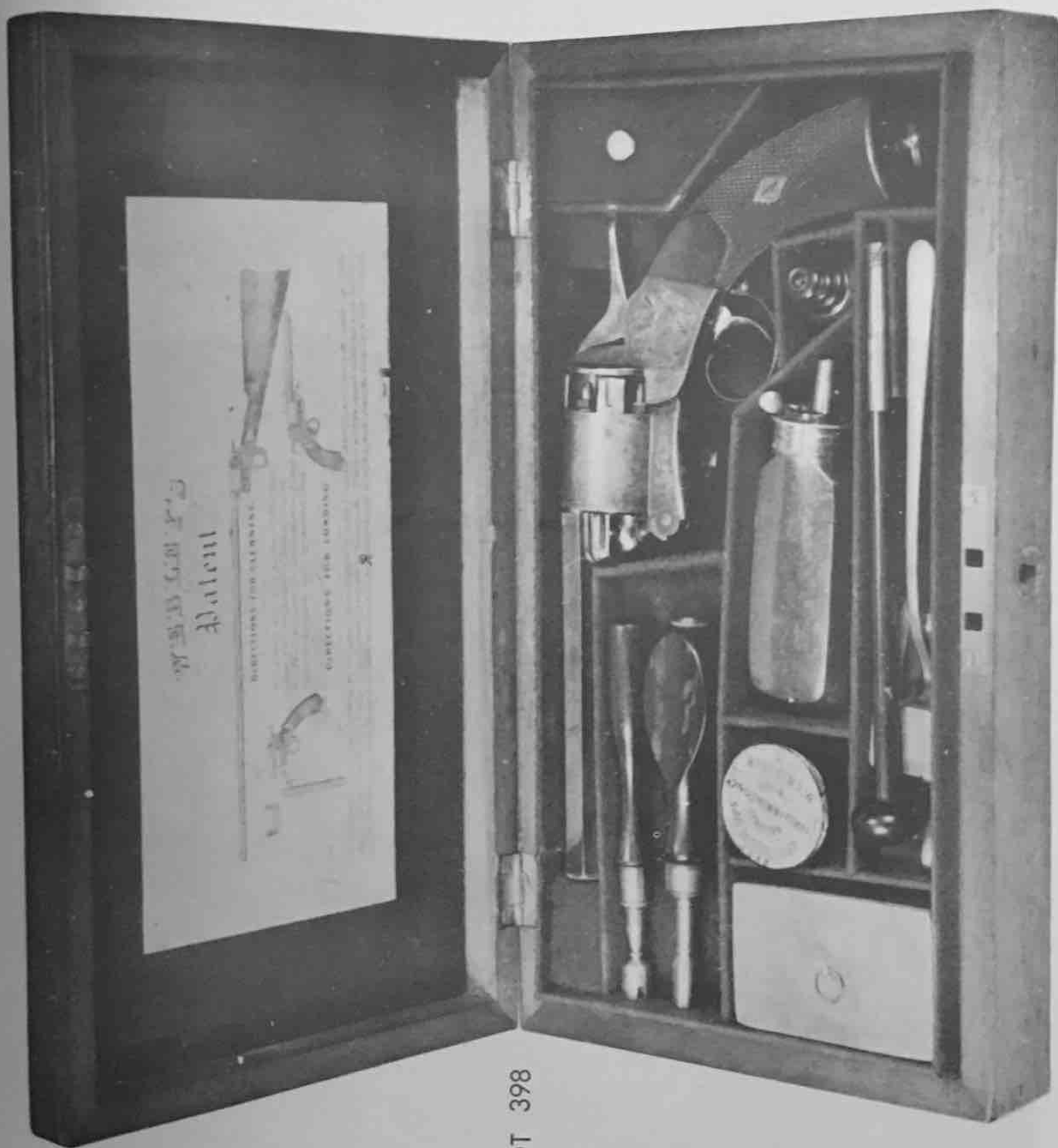
LOT 158



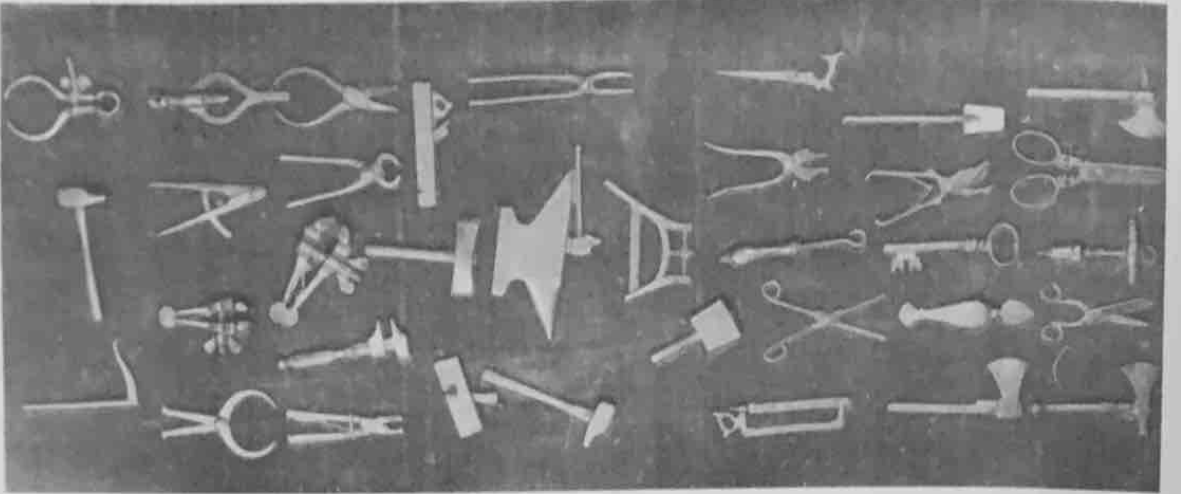
LOT 366



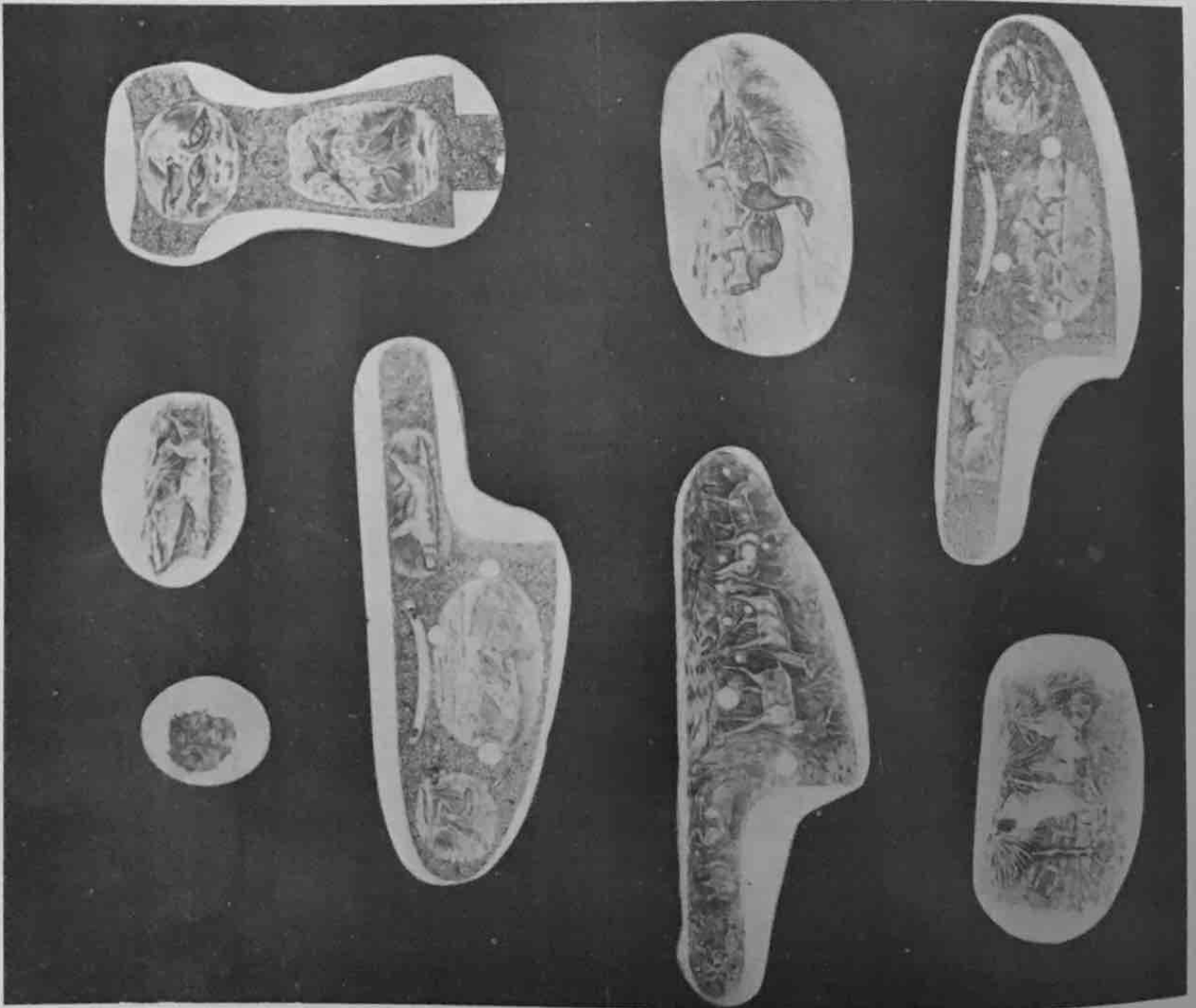
LOT 157



LOT 398



LOT 94



LOT 95

- Lot
199 "Hand Cannon to Automatic" by Herschell C. Logan 1944. 172 pages of superb drawings of selected handguns, excellent condition.
- 200 "The Lee Enfield Rifle" by Major E. G. B. Reynolds, 224 pages, an exhaustive study of the various patterns of this famous rifle with their bayonets, well illustrated with many photographs and drawings, excellent condition with dust jacket.
- 201 "Experts on Guns and Shooting" by G. T. Teasdale - Buckell 1900, 590 pages on sporting guns and rifles with chapters on the leading makers, Manton, Lang, Boss, Gibbs, Westley Richards, Rigby, Webley etc. well illustrated and with many photographs of famous gun-makers of the period, very good condition, cover spotty.
- 202 A rare copy of "The Text Book of Small Arms" 1909 H. M. S. O. the fly leaf inscribed W. Dowell, Lieutenant R. F. A. 272 pages with many illustrations, some coloured and with folding plates of military small arms and ammunition, ballistics etc. covers damaged otherwise very good condition.
- 203 "Centre Fire Pistol and Revolver Cartridges" 96 pages, and "Centre Fire American and British Pistol and Revolver Cartridges" 143 pages, both by White and Munhall all cartridge types and measurements given and illustrated with silhouettes, both excellent condition with dust jackets.
- 204 "Hatcher's Notebook" by Major General Julian S. Hatcher, U. S. A. 1948, 488 pages superbly illustrated and dealing with machine guns, rifles, ammunition, recoil, headspace etc. excellent condition.
- 205 "The Book of the Rifle" by T. F. Freemantle 1901, 558 pages, dealing with the history of the rifle, rifle actions and construction, sights, shooting etc. an exhaustive standard work in good condition.
- 206 "The History of the Birmingham Gun Barrel Proof House" 2nd edition by Clive Harris, excellent condition with dust jacket 159 pages.
- 207 "Smith & Wesson Handguns" 1945, by McHenry & Roper, 233 large pages, profusely illustrated with superb photographs, excellent condition, with dust jacket.
- 208 "Descriptive Catalogue of the Collection of Firearms" in the Victoria Australia Museum 1949 by Penrose, 161 pages describing 482 weapons from flintlocks to modern breech loaders, with illustrations very good condition, slight damage to spine.
- 209 Pistols, Rifles and Machine Guns 1953, by Major W. G. B. Allen, 178 pages, with illustrations excellent condition with dust jacket.
- 210 "Automatic Weapons of the World" 1945 by Johnson & Haven 644 pages dealing with all types of automatic and multifiring arms from earliest times, profusely illustrated, excellent condition with dust jacket.
- 211 "The Peacemaker and its Rivals" by John E. Parsons 1950, 184 pages profusely illustrated a very informative study, excellent condition with dust jacket.
- 212 "Smith & Wesson Revolvers" the pioneer single action models 1957, by John E. Parsons, 242 pages, profusely illustrated, excellent condition with dust jacket torn.

Lot

- 245 (cont'd) and working order, see Plate 38d.*** Brl. 2 $\frac{3}{4}$ in.
- 246 A .450 Webley No. 2 nickle plated five shot solid frame revolver ser. no. 93469, "The British Bull Dog", ovate barrel, fluted cylinder, long chequered walnut two piece birds head grip, excellent condition and working order, see Plate 34b.*** Brl. 2 $\frac{1}{2}$ in.
- 247 A .320 Webley No. 2 five shot solid frame Bulldog revolver, ser. no. 95275, fluted cylinder, chequered two piece birds head grip, very good condition and working order with much original blue.*** Brl. 2 $\frac{1}{8}$ in.
- 248 A rare .500 five shot solid frame Bull Dog revolver, ovate barrel, plain cylinder with grooved stops, chequered walnut two piece birds head grips, lightly pitted, good condition and working order, see Plate 30f.*** Brl. 2 $\frac{3}{4}$ in.
- 249 A .450 Webleys No. 2 solid frame revolver, "The British Bull Dog" ser. no. 54992, ovate barrel, plain cylinder with grooved stops, chequered walnut two piece birds head grips, excellent condition and working order with most original commercial blue, see Plate 30e.*** Brl. 2 $\frac{1}{2}$ in.
- 250 A .22 L. R. Webley MK. IV 6 shot hinge frame target revolver, ser. no. A.15854, fully adjustable rearsight, two piece chequered vulcanite flared grips, grooved trigger. cam lever screw missing otherwise new condition and working order, in its original carton with instruction label, see Plate 46c.*** Brl. 6in.
- 251 A fine .455, 6 shot Webley W. S. target revolver ser. no. 98980, also known as Bisley Target model, flared butt with chequered vulcanite two piece grips bearing W. S. monogram, similar in appearance to the MK. VI service revolver, near new condition and working order, in a Webley carton with instruction label, see Plate 46b.*** Brl. 7 $\frac{1}{2}$ in.
- 252 A magnificent .320 MK. IV 6 shot hinge frame Webley Presentation pocket revolver ser. no. A.97064, profusely engraved overall with fine scrolls and heavily gold plated mother o' pearl grips, grooved trigger, fitted with a cross operating safety at rear of hammer which locks the hammer in the down position, in its original polished oak case with cartridge block and black on gold makers label, the pistol and case in new condition, a truly luxury weapon, see Plate 51c.*** Brl. 3in.
- 253 An unusual and early .450 6 shot Webley nickle plated hinge frame self extractor revolver ser. no. 12618, ovate barrel, plain cylinder with locking slots at front, thumb latch barrel release, one piece chequered walnut grip with lanyard ring, retailed by H. Holland, 98 New Bond St., London, near new condition and working order, in its fitted oak case with oil bottle, turncrew, cleaning rod, cartridge block with 30 blanks, and label of Edmund Woods, 106 Strand, the whole in excellent order, see Plate 37c.*** Brl. 5in.
- 254 A .476 Webley W. G. 1892 model hinge frame revolver with "church steeple" fluted cylinder and chequered vulcanite two piece birds head grips, ser. no. 4333, beautifully refinished, excellent working order, retailed by Army & Navy C. S. L., in its original oak case with retailers label, case key, oil bottle, cleaning rod and 21 blanks, the whole in excellent order.*** Brl. 6in.
- 255 A .442 solid frame 6 shot R. I. C. revolver by Garden, Piccadilly ser. no. 4167, round barrel with ramp type rib, plain cylinder with grooved stops, one piece chequered walnut grip, very good condition and working order, same as Plate 28b.*** Brl. 3 $\frac{1}{2}$ in.

- Lot
256 A .455 Webley W. S. Target Model six shot, hinge frame revolver ser. no. 294699 adjustable sights, flared butt with plain walnut grips, chequered trigger, excellent condition and working order with most original commercial blue, in its fitted leather covered attache case, the lid name plate marked "William C. Dowell" case contains oil bottle, cleaning rod and brushes, several alternative sight elements, a set of six snap caps and some blanks, the whole in very good order.*** Brl. 7½in.
- 257 A Webley .360 No. 2 solid frame target revolver ser. no. 65993, church steeple fluted cylinder, one piece chequered walnut grip, very good condition and working order, in its blue baize lined fitted oak case, excellent condition, see Plate 35a.*** Brl. 7in.
- 258 An unusual .450 solid frame 5 shot R. I. C. type revolver, the frame, guard, ejector rod head and ejector cradle all of brass, possibly for sea service, octagonal screwed in blued steel barrel, one piece chequered walnut grip, fluted cylinder, very good condition and working order, in a fitted oak case with label of "Blissett Son & Tomes, London", see Plate 36b.*** Brl. 2½in.
- 259 A Webley .320 No. 1 6 shot double action solid frame revolver, early type with spring safety on left, plain cylinder with ratchet stops, ser. no. 26915, thumbscrew cylinder pin retainer, ejector rod screwed into butt (missing) excellent condition and working order in its fitted oak case with trade label of E. M. Reilly & Co. containing cleaning rod, ammunition tin and 140 bore round ball iron pincer mould, the whole in very good order, see Plate 31c.*** Brl. 2¾in.
- 260 A .455/.476 Webley W. G. Target 1896 Model revolver, ser. no. 8993, fluted cylinder, hinge frame, flared butt with chequered walnut grips, adjustable sights, very good condition and working order with much original commercial blue, see Plate 45c.*** Brl. 7½in.
- 261 A .455/.476 Webley 1897 W. G. Army Revolver with post 1896 cylinder retainer but without groove machined along barrel linings, ser. no. 12296, fluted cylinder, flared butt with chequered walnut grips, excellent condition and working order with most original commercial blue.*** Brl. 6in.
- 262 A unique .450 6 shot R. I. C. solid frame revolver ser. no. 34497 which is stated by Major Dowell to be the prototype revolver fitted with Silver & Fletchers patent hammer safety and extractor, ovate barrel engraved Silver & Fletchers Patent "The Expert", top strap marked S. W. Silver & Co. Cornhill, London, excellent condition and working order with most original commercial blue, but striker of hammer and rotating sleeve missing, attached to the pistol is an old label dated Oct. 13. 1887, which was sent when the pistol was returned to Webleys after trial by Silver & Fletchers, the label states - "We have today returned the pattern revolver, which is very satisfactory in every way. We should have returned it before, but we wished to shoot it today. We have only rounded off the sharp edges". Webley Story Page 67.*** Brl. 4½in.
- 263 A .450 6 shot solid frame nickle plated R. I. C. revolver, ser. no. 9029, ovate barrel, plain cylinder with ratchet stops, engraved on all parts with scrolls, one piece chequered grip, excellent condition and working order, see Plate 31d.*** Brl. 3½in.

Lot

- 264 A .455/.476 Webley W. G. 1894 Army Model revolver, ser. no. 7979, fluted cylinder, birds head butt with chequered vulcanite grips, backstrap engraved R. B. P. C. from D. S. S. 1896, excellent condition and working order, see Plate 45d.*** Brl. 6in.
- 265 A fine .450/.455 Webley finial model W. G. Target revolver, ser. no. 21878 with late type cylinder retainer and grooves machined along barrel lump, flared butt with chequered walnut grips, adjusting sights, chequered trigger, excellent condition and working order with most original blue, same as Plate 45b.*** Brl. 7½in.
- 266 A .476 Webley W. G. 1892 model revolver ser. no. 5458, church steeple fluted cylinder birds head butt with chequered vulcanite grips, very good condition and working order, see Plate 45f.*** Brl. 6in.
- 267 A .455/.476 1896 model Webley W. G. Army Model revolver ser. no. 13162, flared butt with chequered walnut grips, excellent condition and working order with nearly all original commercial blue finish, see Plate 45a.*** Brl. 6in.
- 268 A fine and scarce .450/.455 Wilkinson Webley Model 1911 target revolver ser. no. 127188 basically a final model W. G. Revolver with modifications specified by Wilkinson, modified cam lever, chequered back strap, flared butt with chequered walnut grips, the left grip with oval silver escutcheon engraved E. F. C., engraved on top of barrel with Wilkinson address and on side of barrel Wilkinson Webley Model 1911, chequered trigger, adjustable sights, fine condition and working order with nearly all original commercial blue, same as Plate 43d. in its holster.*** Brl. 7½in.
- 269 A .455 Webley MK. VI service revolver dated 1917, ser. no. 274504, good condition and working order, in its holster.*** Brl. 6in.
- 270 A .38 (145/200) 6 shot hinge frame Webley pocket revolver ser. no. 41729, adjustable sights, large, hand filling walnut grip, cam lever screw missing otherwise excellent condition and working order, see Plate 46d.***
- 271 An extremely rare .450/.455 Webley nickle plated 1897 W. G. Target Model revolver with special 4in. barrel, ser. no. 21180, late type cylinder retainer but without grooves in barrel lump, adjustable sights, flared butt with chequered walnut grips, near new condition and working order with all original nickle plating, see Plate 45e.***
- 272 A .476 Webley W. G. 1889 model hinge frame revolver ser. no. 2618, with screw cylinder release, "church steeple" fluted cylinder and birds head butt with chequered vulcanite grips, lanyard ring missing, very good condition and working order with much original blue.*** Brl. 6in.
- 273 A .450/.455 Webley Wilkinson 1911 model hinge frame revolver ser. no. 128511, modified cam lever, flared butt with chequered walnut grips, the left grip with oval silver escutcheon, engraved M. R. W., marked on frame "Wilkinson Webley 11" excellent condition and working order with most original commercial blue, see Plate 43b.*** Brl. 6in.
- 274 A .455 MK. VI Webley service revolver ser. no. 383891, fitted with a Webley .22 single shot adaptor unit no. 1808, hinge pin missing, good condition and working order, with a .455 cylinder.*** Brl. 6in.

lot

- 275 A fine .32 R. F. six shot tip up single action revolver identical to a Smith & Wesson, retailed by John Dickson & Son, Edinburgh, ribbed octagonal barrel, sheath trigger, the frame, cylinder and barrel lump engraved with leaves and scrolls, flared butt with two piece ivory grips, originally gold plated overall, excellent condition and working order with approx. 20% original plating, see Plate 24a.*** Brl. 3 $\frac{3}{4}$ in.
- 276 A .450/.455 Webley final model W. G. Target Model hinge frame revolver, ser. no. 21445, late type cylinder retainer, grooves machined along barrel lump, flared butt with chequered walnut grips, excellent condition and working order, see Plate 45 b.*** Brl. 7 $\frac{1}{2}$ in.
- 277 A .22 R. F. 1956 model Webley single shot target pistol ser. no. N. 3273, fitted chequered bakelite grips with thumb rest, new condition and working order, see Plate 60b*** Brl. 9 $\frac{3}{4}$ in.
- 278 An early .320 6 shot solid frame double action revolver, marked on top strap "Improved Central Fire" and on cylinder "Hart and Son, Makers, Birmingham" and "Labor Omnia Vincit" plain cylinder with ratchet stops, compound lever ejector on right, two piece chequered walnut grip, excellent condition and working order with most original blue similar to Plate 31e.*** Brl. 4in.
- 279 A Webley .455 MK V British service revolver ser. no. 148396, chequered birds head vulcanite grips, dated 1915, well refinished, very good condition and working order, in a polished oak revolver case, no lining or partitions.*** Brl. 4in.
- 280 A .455 6 shot solid frame R. L. C. revolver ser. no. 3510, round barrel with ramp type rib, plain cylinder with grooved stops, one piece chequered walnut grip, excellent condition and working order with most original blue, in its polished mahogany case with cartridge block, oil bottle, case key, and cleaning rod, see Plate 28b.*** Brl. 3 $\frac{1}{2}$ in.
- 281 A .455 nickle plated 1885 model Webley W. G. hinge frame revolver ser. no. 2181, church steeple fluted cylinder, screw cylinder release, and birds head butt with chequered vulcanite grips, excellent condition and working order with all original plating, in its polished oak case with cartridge block, oil bottle, turncrew, cleaning rod and case key, the whole in excellent order, see Plate 44d.*** Brl. 6in.
- 282 A .455 Webley MK. VI service revolver dated 1916, ser. no. 244276, good condition and working order, in its oak case with label of Army & Navy C. S. L. with a .22 six shot adaptor cylinder and rifled barrel liner by A. G. Parker, excellent condition.*** Brl. 6in.
- 283 A fine .450/.455 1897 model W. G. Target revolver, ser. no. 16350, adjustable sights, chequered trigger flared butt with chequered walnut grips, excellent condition and working order, in its fitted leather attache case with .22 R. F. W. G. Single shot adaptor and a Morris .297/.230 conversion consisting of special fluted and stepped cylinder and rifled barrel liner, also cleaning rod and brushes, two nickle plated foresight protectors, Hawksley oil bottle and spare sight elements the whole in excellent condition except for handle of case missing.*** Brl. 7 $\frac{1}{2}$ in.

Lot

- 311 A .610" single cavity gunmetal mould casting a plain conical flat based rifle bullet, no sprue cutter but pouring gate at side of base plug, numbered 569, very good condition.
- 312 A 100 bore 6 ball gang brass mould by William Davis, steel sprue cutter marked No. 100, and W. D. very good condition.
- 313 A 14 bore single cavity round ball gunmetal mould by E. J. Churchill, London, with provision for a plug for centre hole, plug missing, steel sprue cutter, excellent condition.
- 314 A 12 bore single cavity brass mould for casting a double cannellured hollow nosed conical rifle bullet, steel sprue cutter, with its wooden handled nose plug (loose) excellent condition.
- 315 A 62 bore 5 ball brass gang mould with wooden handles, brass sprue cutter possibly not original, good condition.
- 316 Three 36 bore round ball iron pincer moulds, very good condition.
- 317 Three similar moulds 35 bore, very good condition.
- 318 Two similar moulds 34 bore, very good condition.
- 319 Two similar moulds, 38 bore, very good condition.
- 320 Three similar moulds, 24, 28 and 30 bore, very good condition.
- 321 Three similar moulds two 32 bore, one 33 bore, very good condition.
- 322 Three similar moulds 55 bore, one pitted two very good condition.
- 323 Two similar moulds, one 45 bore, one 48 bore, very good condition.
- 324 Three similar moulds, one 60 bore, one 140 bore and one .410, very good condition.
- 325 A superb quality and rare steel mould for casting a .567-. 628 four winged hollow nosed explosive shell for the Jacobs percussion four grooved rifle, the hollow nose is for the insertion of a copper percussion tube for explosion on impact, fitted with steel sprue cutter and marked Swinburn, Birmingham; (Swinburn was a noted maker of Jacobs rifles), marked .567-. 628 on sprue cutter, the nose plug for this mould is unfortunately missing, otherwise it is in almost new condition.
- 326 A .500 single cavity steel mould for casting a conical double winged bullet for a two groove percussion rifle, marked 2958 J. D. & S. (John Deane & Son?) and fitted with a special linked sprue cutter which cuts the sprue on opening the mould, excellent condition.
- 327 A .360 single cavity steel mould by Alexander Henry, marked A. H. casting a single cannellured, hollow nosed bullet with flat base, steel sprue cutter, nose plug missing otherwise excellent condition.
- 328 A 25 bore single cavity steel mould casting a Pritchett type bullet with conical base cavity, no sprue cutter, cord wrapped handles, excellent condition.
- 329 A .430 single cavity steel mould, with sprue cutter, casting a hollow nose single cannellured bullet, nose plug missing and a similar mould for a 30 bore hollow base Pritchett type bullet, complete with base plug, both very good condition.
- 330 Two 13 bore iron pincer moulds for round balls, very good condition.
- 331 A 10 bore round ball iron pincer mould marked W. D. and a 32 bore pincer mould both very good condition.

- Lot
- 332 9 original Webley & Scott gauges used in the manufacture of MK. VI revolvers including gap gauges for cam lever, trigger stop, hammer, barrel length, hammer swivel, foresight ramp, also butt template, trigger filing gauge and recoil shield gauge, all in very good condition, see Plate 67 figs. 2, 3, 4, 5, 7, 12, 14, 16, and 17.
- 333 10 original Webley gauges for MK. VI and other .455 service revolvers, comprising ring gauges and other gauges for backsight profile on stirrup, barrel joint, cylinder stop, cylinder cam, cam axis holes with bore, and a compression gauge for the MK. V revolver mainspring, see Plate 68 figs. 1, 2, 3, 4, 5, 6, 7, 8, 9, and 16 all very good condition.
- 334 13 original Webley gauges for cam lever, barrel catch, MKVI stirrup, MKI stirrup, MK VI trigger stop, signal pistol hammer MK VI butt swivel, see Plate 69 figs. 1, 2, 3, 5, 6, 8, 19, 20, 24, 25, 26, 28 and 29, all very good condition.
- 335 22 original Webley gauges mostly of plug type for Morris Tube, .44 Russian model, body opening gauge and back cylinder stop gauge, all very good condition, in a leather case, see Plate 69, figs. 4, 7, 9, 10, 11, 12, 13, 14, 15, 16, 17, 18, 21, 22 and 23
- 336 7 original Webley gauges for pistols and revolvers, 6 small milling cutters assorted, and approximately 10 other gunsmiths tools, all very good condition.
- 337 A quantity of gunsmiths screw making tools and cutters with gauges etc., all good condition.
- 338 40 assorted gunmakers reamers mostly for chambering rifles, all very good to excellent condition.
- 339 A similar lot of approximately 20 items, very good to excellent condition.
- 340 A box of firearm parts including four revolver frames, a Mauser 1898 auto pistol action, cylinders, two auto pistol magazines, two .455 cylinders one for a MK. VI marked on back FOR USE WITH S. & W. 1917 CLIPS and .45 ACP and other parts, mostly very good condition.
- 341 A most interesting 7.92 m. m. Mauser 98 bolt action rifle ser. no. 4986 captured during the Boer War, the butt carved with the name of the Boer owner J. M. van Wyk together with names and dates of battles including Estcourt, Colenso, and Spion Kop, attached to the left side of the stock is a plate inscribed "Captured 15 April 1902 near Harrismith by General Elliotts Force, Presented to The Earl of Onslow by Capt. F. Bowles, Oxfordshire, Yeomanry", very good condition and working order.***
- 342 A sporterized .240" Kar 88 rifle marked Erfurt 1897, ser. no. 6480, very good condition and working order.***
- 343 A 6.5 m. m. Steyr Model 1892 bolt action repeating half stocked sporting rifle ser. no. 2817A, excellent condition and working order.***
- 344 A .177 German air gun The Ansonia, lightly pitted, good working order.
- 345 A box of 30 holsters, 27 leather, 3 canvas, with a pouch and rifle sling, very good to excellent condition.

AUTOMATIC PISTOLS

Lot

- 346 A .455 Webley & Scott Self Loading pistol MK. 1, 1912 model, ser. no. 5005, dated 1914, grip safety, lanyard ring, button magazine release at heel of butt, chequered walnut grips, ordnance marked, very good condition and working order with much original finish, together with its official leather magazine pouch containing six magazines, very good condition and working order, see Plate 62b.*** Brl. 5in.
- 347 A rare .38 Webley & Scott, High Velocity Hammerless 1913 model self loading pistol ser. no. 66573, chambered for the 9 m. m. Browning Long cartridge, hand fitting walnut grips, excellent condition and working order with most original commercial blue, see Plate 64d.*** Brl. 5in.
- 348 A .22 R. F. Webley & Scott single shot 1911 model semi-automatic target pistol, ser. no. 137284, built on the self-loading pistol design, chequered vulcanite grips, bottom strap grooved for attachment of shoulder stock, no original finish, very good condition and working order, see Plate 63b.*** Brl. 9in.
- 349 A nice .32/7. 65 m. m. Webley & Scott 1906 Police Model auto pistol ser. no. 1379 thumb safety on left, stud hammer with hole, chamfered edges to slide, chequered vulcanite grips, adjustable rearsight, near new condition and working order with all original commercial blue, see Plate 64e.*** Brl. 3¼in.
- 350 A 9 m. m. 1909 model Webley & Scott auto pistol as adopted in 1920 by the South African Police, ser. no. 116550, stud hammer, grip safety, adjustable rearsight, plain wooden grips, very good condition and working order, see Plate 64b.*** Brl. 4¾in.
- 351 A .32/7. 65 m. m. Webley & Scott auto pistol ser. no. 134810, stud hammer, thumb safety on left, chequered vulcanite grips, excellent condition and working order with most original blue, see Plate 61f.*** Brl. 3¾in.
- 352 A .25/6. 35 m. m. Webley & Scott auto pistol finial model, ser. no. 10930, stud hammer, safety on left, chequered vulcanite grips, left grip chipped, very good condition, action slightly A. F. as Plate 61b.*** Brl. 2in.
- 353 A similar pistol ser. no. 11390, excellent condition and working order with most original blue, in its carton with cleaning rod and box of 25 rounds of F. N. ammunition, see plate 61b.*** Brl. 2in.
- 354 A .32/7. 65 m. m. Webley & Scott 1906 Police Model auto pistol ser. no. 4807, thumb safety on left, stud hammer with hole, chamfered edges to slide, chequered vulcanite grips, adjustable rearsight, excellent condition and working order in its original carton, similar Plate 64e.*** Brl. 3¼in.
- 355 A .25 Harrington & Richardson hammerless copy of the Webley auto pistol ser. no. 13402, this pistol was produced by agreement with Webleys and covered by American patents, near new condition and working order with all original finish, in its leather holster, see Plate 61a.*** Brl. 2½in.

Lot

- 356 An interesting .32/7. 65 m.m. Webley 1913 model auto pistol ser. no. 143629 with modified barrel for use as a humane killer automatic safety, stud hammer, chequered vulcanite grips, excellent condition, action stiff, see Plate 61c. *** Brl. 4½ in.
- 357 A .455 Webley & Scott MK. 1 1912 model self loading pistol ser. no. 5831, chequered vulcanite grips, grip safety, lanyard ring, near new condition and working order, dated 1914, in its leather holster. *** Brl. 5 in.
- 358 A .25 Colt pocket model hammerless auto pistol ser. no. 115237, grip safety, chequered vulcanite grips with Colt name and insignia, excellent condition and working order. *** Brl. 2 in.
- 359 A .22 R. F. Webley & Scott single shot 1911 model semi-automatic pistol ser. no. 68177 ordnance marked, built on the automatic pistol frame, excellent condition and working order, see Plate 63a. *** Brl. 4½ in.
- 360 A rare .455 Webley & Scott MK. 1 No. 2 Self Loading pistol as approved for the Royal Flying Corps. in 1915, and intended for air to air fighting before machine guns came into use, ser. no. 6557, chequered vulcanite grips, the bottom of the butt grooved on left for attachment of shoulder stock, special rearsight adjustable for windage and elevation and graduated from 50 - 200 yds. safety fitted to hammer which it locks at full cock, grip safety, very good condition and working order, see Plates 62a. (shown with a shoulder stock fitted) and 64a no shoulder stock with pistol. *** Brl. 6 in.

CENTRE AND RIM FIRE PISTOLS AND REVOLVERS.

- 361 A .22 R. F. 7 shot Webley copy of a Smith & Wesson tip up single action revolver No. 2, octagonal barrel, sheath trigger, brass frame, originally silver plated, walnut grips, very good condition and working order, see Plate 23e., in its mahogany case. *** Brl. 3½ in.
- 362 A .32 R. F. 6 shot Webley copy of a Smith & Wesson tip up single action revolver ser. no. 672, retailed by J. Calvert, 10 commercial St. Leeds, spur trigger, octagonal barrel, plain walnut grips, blued steel finish overall, excellent condition and working order in its walnut veneered fitted case, excellent condition. *** Brl. 3¾ in.
- 363 A fine .22 R. F. 7 shot Webley copy of a Smith & Wesson tip up single action revolver No. 2 octagonal blued steel barrel marked Webley & Sons, plated brass frame, sheath trigger, walnut grips, excellent condition and working order with nearly all original finish, in its original walnut veneered case with oil bottle, cleaning rod and case key, in excellent order. ***
- 364 A .41 Webley copy of a Colt No. 3 derringer with slight modifications, no. 32, plated frame, spur trigger, button barrel release, birds head butt, walnut grips, excellent condition and working order, in a mahogany case with some dummy cartridges, see Plate 25b. *** Brl. 2½ in.
- 365 A .22 R. F. 7 shot Webley copy of a Smith & Wesson tip up revolver, no. 4 all steel construction, no original finish, action slightly A. F. good condition, in a mahogany case with a pair of ivory grips. *** Brl. 3½ in.
- 366 An extremely rare Webley Army Express "Buntline" type solid frame double action revolver ser. no. 35059 chambered for the .44 Smith & Wesson Russian cartridge, the 12 in. barrel is octagonal with top rib and is screwed into the frame, fitted with three leaf rearsight to 75 yds. fluted cylinder, Colt type sliding rod ejector and loading gate on right, birds head butt with chequered walnut grips, with its original detachable wooden shoulder stock, lightly

Lot

- 366 (cont'd) pitted, no original finish, good condition and working order, retailed by E. M. Reilly & Co. see Plate 33a. and page 73 for full description, a fine addition to any Webley collection.*** Brl. 12in.
- 367 A scarce .450/.455 6 shot Wilkinson Webley 1905 model hinge frame revolver ser. no. 125322, modified cam lever, flared butt with chequered walnut grips, the left grip inset with an oval silver escutcheon, marked "Wilkinson Webley 05" excellent condition and working order, see Plate 43a.*** Brl. 6in.
- 368 A .38 No. 2 MK. 1* 1942 model self cocking hinge frame Enfield service revolver ser. no. A.4446 manufactured by Albion Motors Ltd. new condition and working order.*** Brl. 5in.
- 369 A .38 No. 2 MK. 1 1932 model hinge frame Enfield service revolver ser. no. B.1228, marked with crown and Enfield, excellent condition and working order, see Plate 56a.*** Brl. 5in.
- 370 A .450 6 shot solid frame R. L. C. revolver, plain cylinder, two piece chequered walnut grips, very good condition and working order.*** Brl. 3½in.
- 371 A .32 R. F. 6 shot solid frame single action revolver no. 77, marked Webleys Patent, sheath trigger, octagonal barrel, chequered two piece butt, very good condition and working order, see Plate 23c.*** Brl. 3½in.
- 372 A fine and scarce .450/.455 Wilkinson Webley Model 1911 (marked as such) Target revolver ser. no. 127209, grooves machined alongside barrel lump, modified cam lever, flared butt with chequered walnut grips, the left grip inset with oval silver escutcheon, chequered trigger and buttstraps, special filler piece between grip and guard, fine condition and working order with nearly all original commercial blue, same as Plate 43d.*** Brl. 7½in.
- 373 A scarce .38 MK. III 1932 model hinge frame revolver ser. no. 39022, with ordnance markings, fitted with safety catch on right, large chequered walnut grip, very good condition and working order, see Plate 51e.*** Brl. 4in.
- 374 A .22 R. F. tip-up breech saloon pistol with octagonal barrel, scroll engraved frame, trigger type barrel release, chequered one piece walnut grip with silver escutcheon very good condition and working order, similar to Plate 26c.*** Brl. 8in.
- 375 A good quality 20 bore double barrelled top lever hammerless sidelock Howdah pistol by T. Bland & Sons, smooth bored but fitted with sights for shooting ball cartridges, single trigger, automatic safety with gold inlaid "SAFE", chequered saw handled walnut grip with inset brass re-inforcement plates, lanyard ring, lock plate engraved "Blands" Single Trigger Pistol, ser. no. 15330, excellent condition and working order with much original finish.*** Brl. 9½/8in.
- 376 A 5 m. m. R. F. French Flobert pistol ser. no. 2978, engraved frame, spur guard, fluted butt with chisselled butt cap, good condition and working order.*** Brl. 4¾/8in.
- 377 An early .450 6 shot open frame double action revolver marked ".450 Central Fire" octagonal barrel, sliding rod ejector and loading gate on right, plain cylinder with reinforced ring at rear, grooved stops, chequered two piece walnut grips, very good condition and working order with much original finish, similar to Plate 27a.*** Brl. 6in.

- Lot
378 An extremely rare .450 Webleys Nos. 2 solid frame R. L. C. revolver ser. no. 71361 fitted with special one piece chequered walnut "Balkan" grip, ovate barrel, fluted cylinder, excellent condition and working order with most original commercial blue. This is one of only 12 such revolvers made to the special order of a potentate for arming his bodyguard, see page 66 Webley Story & Plate 36d.*** Brl. 4³/₈in.
- 379 A .38 No. 2 MK1 1939 model Enfield hinge frame service revolver ser. no. 68403, Enfield marked, chequered walnut grips, fitted with special 6 shot .22 conversion unit and rearsight, together with its .38 cylinder, near new condition and working order.*** Brl. 5in.
- 380 A scarce .450/.455 Webley W. G. 1893 model hinge frame Target revolver with flat faced hammer and floating striker ser. no. 5090, church steeple fluted cylinder, flared butt with chequered walnut grips, adjustable sights chequered trigger, very good condition with most original blue, excellent working order but cylinder retainer slightly A. F., see Plate 44b., in a canvas covered case with a .22 L. R. single shot adaptor unit and two nickle plated foresight protectors, the whole in very good order.*** Brl. 7¹/₂in.
- 381 Two rare .38 8 shot Webley Fosbery 1902 model automatic revolvers ser. nos. 1108 and 1184, chambered for the .38 Colt automatic pistol round, two piece chequered walnut grips, both excellent condition and working order but action of 1184 stiff, see Plate 55a., together with a spare cylinder ser. no. 103 and a copper printing block depicting the .38 Fosbery in a double compartment cutlery case of polished mahogany, the sliding tray fitted for the pistols, these revolvers are very difficult to locate and this is therefore a choice lot for the Webley or Auto pistol collector.*** Brl. 6in.
- 382 The barrel and cylinder complete with frame latch of a rare 1878 Mauser 9 m. m. hinged frame Zig-Zag revolver ser. no. 3333, marked with Mauser address and patent date on barrel, zig zag grooves cut into cylinder, bore pitted otherwise fine condition with nearly all original finish.*** Brl. 5³/₈in.
- 383 A 7 m. m. R. F. Unwin & Rodgers knife pistol with octagonal german silver barrel marked with Unwin & Rodgers address and "NON * XLL", chequered horn side cheeks, german silver mounts with cartridge compartment, two knife blades, very good condition and working order.*** Brl. 3¹/₂in.

PERCUSSION PISTOLS & REVOLVERS.

- 384 A 48 bore, 5 shot Webley Longspur 3rd Model single action percussion revolver ser. no. 1175, octagonal barrel screwed on to cylinder pin secured to bottom strap with a thumbscrew, Kerr type rammer on left, scroll engraved frame, engraved "Webley's Patent" on left and "By Her Majesty's Royal Letters Patent" on backstrap, chequered walnut grips with plain bevelled panels at top, lanyard eye in butt, some light pitting, very good condition and working order, see Plate 15b., in its brass bound mahogany case with nipple key, turn screw, Eley caps, oil bottle, planished tin flask with standing seam, correct single cavity brass mould and cleaning rod, the whole in excellent condition. Overall 12¹/₂in. Brl. 6¹/₂in.
- 385 A 54 bore 5 shot Webley solid frame double action percussion revolver marked London 39618, octagonal barrel screwed into frame, Kerr type rammer on left, spring cylinder pin retainer on right, two piece chequered walnut grip, excellent condition and working order, with much original finish, in its mahogany case with Dixon bag flask, double cavity brass mould with steel sprue cutter, cleaning rod, oil bottle, associated turn screw,

Lot

- 385 (cont'd) lubricating composition and cap tin, the whole in excellent order, see Plate 20a. Overall 11½ in. Brl. 6 in.
- 386 A similar revolver with thumbscrew cylinder pin retainer, frame pitted, no markings, dull steel finish, action slightly A. F. good condition. Overall 11 in. Brl. 6 in.
- 387 A 90 bore 6 shot closed wedge frame self cocking percussion revolver by W. Rowntree, octagonal barrel with Colt type rammer, scroll engraved frame, unusual one piece chequered walnut grip with pronounced curve, silver escutcheon, butt trap, excellent condition and working order with much original finish, see Plate 19e. Overall 10½ in. Brl. 5½ in.
- 388 A scarce 60 bore 5 shot pen frame Bentley self cocking percussion revolver, the frame of german silver with light scroll engraving and engraved Bentley's Patent No. 301, Bentley's address on octagonal barrel, rammer peg fitted to left of barrel breech for detachable rammer now missing, barrel screwed onto cylinder pin and retained by a round headed bolt to the bottom frame strap, hammer fitted with Bentleys patent catch, two piece polished grips, excellent condition and working order with most original finish, see Plate 11d. Overall 12½ in. Brl. 7¼ in.
- 389 A 120 bore 6 shot Webley Longspur 2nd Model single action percussion revolver ser. no. 546, octagonal barrel hinged to frame and retained by a wedge through cylinder pin engraved James Webley address. Scroll engraved frame, engraved on left "James Webley Patentee" and with "By Her Majesty's Royal Letters Patent", chequered walnut grips, one piece rammer pivoted on hinge pin at right, rammer nut not original, very good condition and working order with some original finish, see Plate 12c. In its mahogany case with nipple key A. F. unopened tin of caps, common top copper flask, and correct single cavity brass mould with steel sprue cutter, the whole in very good order. Overall 8¾ in. Brl. 3½ in.
- 390 A 54 bore 5 shot Webley closed wedge frame double action percussion revolver, ser. no. 3281, octagonal barrel with Colt type rammer, lightly scroll engraved frame, two piece chequered walnut grip, trigger spring A. F. very good condition and working order, see Plate 19c. Overall 11½ in. Brl. 6 in.
- 391 A nice 120 bore 6 shot Webley Longspur 1st Model single action percussion revolver ser. no. 222, octagonal barrel hinged to frame and retained by wedge through cylinder pin, fitted with peg on right side for detachable rammer now missing, lightly scroll engraved frame with "James Webley Patentee" on left, one piece chequered walnut grip with butt trap, traces of original finish, very good condition and working order, see Plate 12a, in its mahogany case with oil bottle, cleaning rod, wad punch, Hawksley bag flask, nipple key turnscrew, 120 bore iron round ball pincer mould, and tin of Eley caps, the whole in excellent order, Overall 8½ in. Brl. 31/8 in.
- 392 A magnificent 48 bore 5 shot Webley Longspur 2nd Model single action percussion revolver ser. no. 813, retailed by T. E. Mortimer, Edinburgh, octagonal barrel hinged to frame and wedged to cylinder pin, scroll engraved frame marked "Webleys Patent" and with "By Her Majesty's Royal Letters Patent", one piece rammer pivoted on hinge pin at right and retained by a spring clip on breech of frame, chequered walnut two piece grip with lanyard eye, near new condition and working order with nearly all original finish see Plate 15a, in its original fitted oak case the lid escutcheon engraved Chas. Pearson Esq., retailers trade label with ser. no. of pistol in lid, case contains tin of caps with retailers

Lot

392

(cont'd) label, oil bottle, cleaning rod with interchangeable jag, Sykes patent top bag shaped flask, correct single cavity brass mould with steel sprue cutter, ivory nipple box with spare nipples and ivory handled nipple key and turncrew, the former with pricket, the whole in virtually new condition, a superb lot for the discriminating collector, with its leather bound canvas case cover. Overall 12½in. Brl. 6⁷/₈in.

393

A fine 90 bore 5 shot Webley solid frame double action percussion revolver marked Patent No. 7580, octagonal barrel with Kerr type rammer on left, spring retainer for cylinder pin, two piece chequered walnut grip near new condition and working order, in its original mahogany case containing case key pear shaped copper pistol flask, nipple key, caps, oil bottle, cleaning rod and correct double cavity brass mould with steel sprue cutter, and some skin cartridges, the whole in very fine order, see Plate 20b. Overall 9in. Brl. 4½in.

394

A 120 bore 6 shot Webley Longspur 2nd Model converted from 1st Model single action percussion revolver ser. no. 199 octagonal barrel hinged to frame and wedged to cylinder pin, one piece rammer unusually pivoted on hinge pin on left side, scroll engraved frame engraved on right "Webleys Patent" and "By Her Majestys Royal Letters Patent" on back strap, two piece chequered walnut grip with lanyard ring, traces of original finish, rammer spring clip missing, crisp condition and working order, see Plate 12b., in its mahogany case with iron round ball pincer mould, common top bag flask, turncrew, caps, oil bottle and cleaning rod, the whole in very good order. Overall 9in. Brl. 4in.

395

A scarce 72 bore 5 shot open frame Bentley single action percussion revolver engraved Patent No. 29b, octagonal barrel wedged to cylinder pin, Colt type rammer under barrel, beautifully scroll engraved frame, long hammer spur, two piece chequered walnut, excellent condition and working order with some original finish, see Plate 16d., in its mahogany case with nipple key, oil bottle, iron round ball pincer mould, tin of caps, cleaning rod and a patent top bag flask by Bartram, the whole in fine order. Overall 10½in. Brl. 4⁷/₈in.

396

A 120 bore 6 shot Webley Longspur 2nd Model single action percussion revolver ser. no. 622, octagonal barrel hinged to frame and wedged to cylinder pin, one piece rammer pivoted to frame hinge on right, scroll engraved frame, engraved "Webley's Patent" and "By Her Majestys Royal Letters Patent" on back strap, two piece chequered walnut grips, foresight and rammer spring clip missing, very good condition and working order, in its red velvet lined mahogany case with round ball pincer mould, patent top Bartram bag flask and cap tins, the whole in very good order. Overall 8½in. Brl. 3³/₈in.

397

A 60 bore 5 shot Webley Longspur 3rd Model single action percussion revolver ser. no. 1025, octagonal barrel screwed to cylinder pin and retained by a screw into bottom strap, Kerr type rammer on left, scroll engraved frame with "Webleys Patent" on right and "By Her majestys Royal Letters Patent" on back strap, unusually fitted with a sliding safety catch on left of frame, two piece chequered grip with bevelled panels at top, excellent condition and working order with much original barrel finish, see Plate 14b., in its velvet lined mahogany case containing nipple key, correct single cavity brass mould, cleaning rod and cap tins, the whole in very good condition. Overall 10½in. Brl. 4⁷/₈in.

Lot

- 398 A fine 60 bore, 5 shot Webley Longspur 2nd Model single action percussion revolver ser. no. 629, octagonal barrel hinged to frame and wedged to cylinder pin, one piece rammer pivoted to frame hinge and retained by spring clip, scroll engraved frame, marked "Webleys Patent" on left and "By Her Majestys Royal Letters Patent" on backstrap, two piece chequered walnut grip with lanyard ring, excellent condition and working order with most original finish, in its original mahogany case with pictorial instruction label in lid and containing plated bullet box, tin of caps, nipple key and seat cleaner, lozenge shaped copper flask, correct single cavity brass mould with steel sprue cutter, ebony oil bottle and cleaning rod, the whole in excellent order, see Plates 13 and 14a. Overall 10in. Brl. 5in.
- 399 An extremely rare and possibly experimental cut down 140 bore percussion breech loading rifle by Richardson London probably modified for use by a poacher, this has a transverse cylindrical breech piece with a loading port at top, a rotating breech block is fitted with a percussion nipple and a lever on the right for rotation, this lever is hinged to the breech block and has a hinged plunger for ramming the ball into the loading port, back action lock, the hammer fitted with a folding spur, and there is a folding trigger, fair condition and working order, in a leather holster. Overall 15½in. Brl. 9½in.
- 400 A magnificent cased set of four percussion pistols by James Webley, comprising a pair of 17 bore fullstocked percussion holster pistols round barrels of browned skelp twist lightly engraved with acanthus leaves and marked underneath J. W. (James Webley), swivel ramrods, nicely formed snail type nipple bolsters, back action locks with safety bolts, engraved with scrolls and J. Webley, iron furniture, scroll engraved, chequered bag shaped butts, silver escutcheons, both hammer spurs have been repaired, otherwise these pistols are in very fine condition with most original finish and crisp working order, together with a pair of 48 bore screw barrel boxlock percussion pocket pistols, the octagonal barrels engraved J. Webley, scroll engraved frames, top safeties, concealed triggers, finely chequered one piece butts with silver escutcheons and butt caps, fine condition and working order with most original colour hardened finish, the two pairs of pistols in their beautifully fitted blue velvet lined brass bound mahogany case with rectangular brass handle inset in lid and containing two steel round ball pincer moulds for 17 bore and 48 bore balls, cleaning rod, fluted copper three way flask with sliding base compartment, brass oil bottle, turnscrew, nipple key with pricker, combined barrel key and nipple wrench for pocket pistols, ivory nipple box and cap tins, the whole in very fine order, a unique and highly desirable collectors lot, see Plates 9 and Frontispiece.
- Overall 14¾in. Brl. 9in.
Overall 7½in. Brl. 3in.

END OF SALE.

WILLIAM KITCHEN PATER

— Poet —

AND HIS SON

ANTHONY PATER

—

POET

WITH A PREFACE BY THE AUTHOR

14, BEDFORD SQUARE, LONDON, W.

PRINTED BY

JOHN WATKINS & CO., LTD.

1900

ALL RIGHTS RESERVED

WELLER & DUFTY LTD.

(Established 1835)

NEXT SALE BY AUCTION

— of —

ANTIQUE ARMS

AND

ARMOUR

will be held on
10th August, 1966

at THE FINE ART SHOW ROOMS
141 Bromsgrove Street
Birmingham 5

CLOSING DATE FOR ENTRIES

8th July, 1966

ILLUSTRATED CATALOGUE 2/6d

WELLER & DUFTY LIMITED

(Established 1835)

SPECIALIST AUCTIONEER'S

OF

ARMS, ARMOUR & ASSOCIATED MILITARIA.

PICTURES & DRAWINGS, INCLUDING OLD MASTERS PAINTINGS
18th/19th Century PAINTINGS & DRAWINGS, IMPRESSIONIST &
MODERN BRITISH PAINTINGS, DRAWINGS & SCULPTURE.

FURNITURE, CLOCKS & WORKS OF ART

INCLUDING ENGLISH & CONTINENTAL FURNITURE.

CERAMICS & GLASS INCLUDING ENGLISH PORCELAIN & POTTERY,
CONTINENTAL PORCELAIN & POTTERY, CHINESE CERAMICS &
WORKS OF ART HARDSTONE CARVINGS, BRONZES, ENAMELS,
IVORIES, SCULPTURE AND JAPANESE PORCELAIN.

SILVER & JEWELLERY, OBJECTS OF VIRTU, INCLUDING PORTRAIT
MINIATURES, WATCHES & SCIENTIFIC INSTRUMENTS.

CARPETS, RUGS & TAPESTRIES, INCLUDING CHINESE WASHED,
PERSIAN, ETC.

ALL THE ABOVE SOLD IN SPECIALIST SALES.

ARMS, ARMOUR & ASSOCIATED MILITARIA EVERY 5 WEEKS
Illustrated Catalogue 2/6d.

SALES EVERY THREE WEEKS OF ANTIQUES & FINE ART.
Illustrated Catalogue 2/6d.

SPECIALIST SALES OF OTHER ITEMS AT PERIODIC INTERVALS
TO BE ANNOUNCED IN THE PRESS.

ALL DETAILS OF THE ABOVE FROM

THE FINE ART SALEROOMS,

141 BROMSGROVE STREET, BIRMINGHAM 5.

PHONE: MIDLAND 5525/5360

CABLES FINEART B'HAM.

Expert Valuations of all kinds made.

The Sale Rooms are Open Daily for the sale of certain items by Private
Treaty, or at any appointed time.
